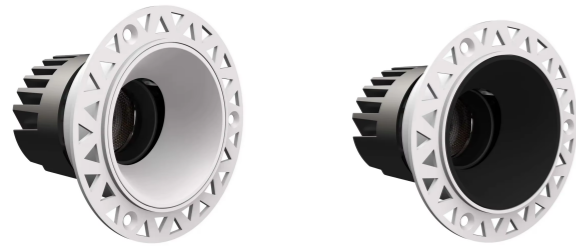




TRIMLESS

TRIMLESS 10/12



Basic Parameters

Material	ADC12
Coating	Spraying
Installation	Recessed
Size	Φ50/70mm
Opening size	Φ55/75mm

Dimming Method

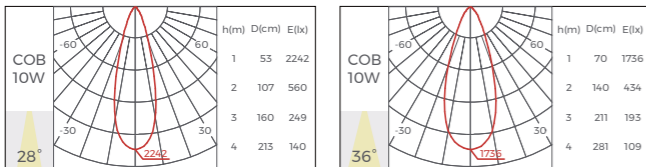


1-10V DALI dimming

Luminaire Parameters

Version	Normal
Light source	COB
Input voltage	220-240VAC
Power	10W
CRI	Ra>90
CCT	2700K/3000K/4000K
Beam angle	28°/36°
Light efficiency*	85LM/W
Luminous flux*	850LM/3000

* Light efficiency & Luminous flux parameters based on 4000K Light source
 2700K Light efficiency & Luminous flux=4000K*0.87
 3000K Light efficiency & Luminous flux=4000K*0.92



Luminaire Parameters

Version	Normal
Light source	COB
Input voltage	220-240VAC
Power	12W
CRI	Ra>90
CCT	2700K/3000K/4000K
Beam angle	28°/36°
Light efficiency*	85LM/W
Luminous flux*	1020LM/3000

* Light efficiency & Luminous flux parameters based on 3800K Light source
 3000K Light efficiency & Luminous flux=3800K*0.9
 5000K Light efficiency & Luminous flux=3800K*0.95