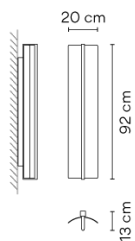


6414

Design By Sebastian Herkner

The convex shade wall light features an open metal frame imbedded with LEDs that contains a reflector formed from a rounded sheet. The black frame is affixed to the wall and casts a diffuse glow that evokes the look of raining light.

Model Sheet

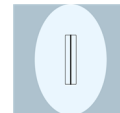


Finish	11 Black NCS S 8500-N
LED temperature color	2200 K / 2700 K / 3000 K Optional 2200 K / 2700 K / 3000 K Min. quantity, upcharge and extra lead time apply
Dimming	1-10V / Casambi / DALI / Push
Installation type	Surface Canopy
Materials	Body: Aluminum Reflector: Aluminum Driver box: Aluminum
Light source	1 x LED STRIP 20,8W 750mA E
LED	CRI>90 2165 lm 104 2200 K / 2700 K / 3000 K
Driver	Constant Current 750 90-305 V V 50-60 Hz HZ
	<input type="checkbox"/> F <input checked="" type="checkbox"/> Dimmable <input checked="" type="checkbox"/> LED <input checked="" type="checkbox"/> IP20 <input checked="" type="checkbox"/> Multi-volt <input checked="" type="checkbox"/> 50-60Hz <input checked="" type="checkbox"/> 1-10V <input checked="" type="checkbox"/> TRIAC
Application	Wall Lamps
Packaging	1 Box 1,132 m x 0,3 m x 0,3 m Gross weight 6 Net weight 4 Vol. 0.1018

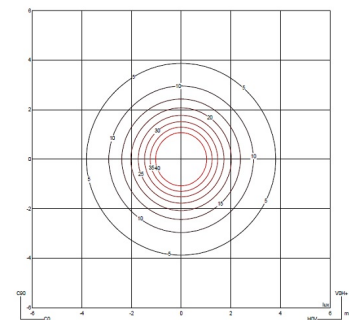
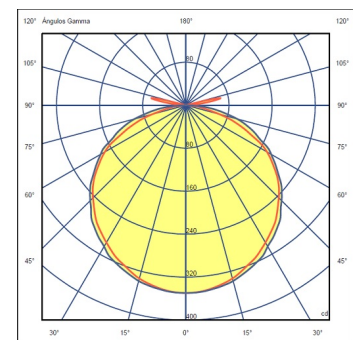
Lighting effect

Reflected

Creation of visual hierarchies within the luminaire itself, emphasising the materiality and texture of the product

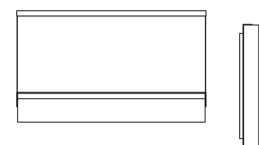


Photometric Data



Efficiency	45.26 lm/W
Coordinate System	CG
Total Flux	1117.95 lm
Maximum Value	349.46 cd

Other Applications



All of our products come with a five-year warranty. Check our legal terms at www.vibia.com/warranty

Vibia Lighting, S.L.U.

Office / Oficina
Progrés 4-6. 08850 Gavà. Barcelona, Spain.

International T +34 934 796 971
Spain / Portugal T +34 934 796 970

customer.service@vibia.com
vibia.com