



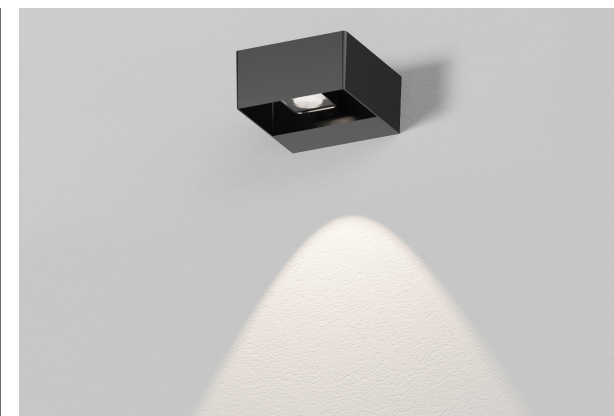
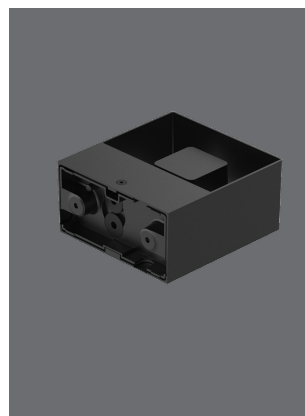
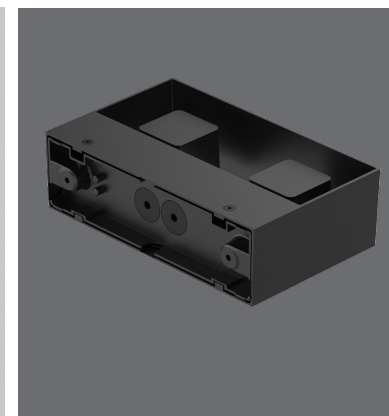
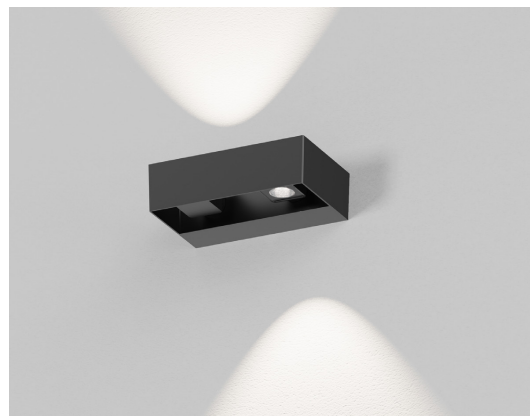
WL179

IP65

This is a cube wall lamp which can adjust lighting direction with 350degree rotation. It adopted ADC12 aluminium housing with UV resistant surface treatment to keep a good heat dissipation and corrosion resistance. There has a knock down hole to input AC line in side, which is convenient for installation on the unembedded wall. Two size for option: one head and two heads.



LED Wall Light



FEATURES

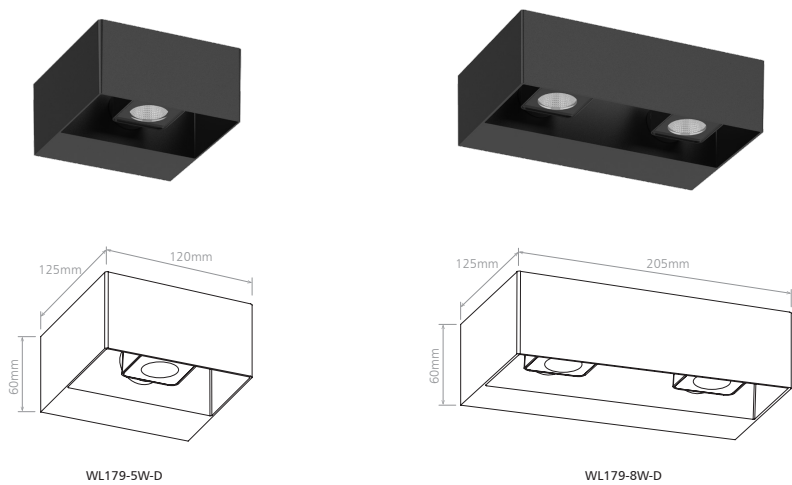
- Adjustable lighting direction with 350 degree rotation
- Knock down hole in side available for side cable entry
- IP65 waterproof
- Interchangeable CCT(3000K+4000K) with slide switch
- Finished color: Black RAL9005, White RAL9016, Gray RAL7015
- Triac dimming

APPLICATIONS

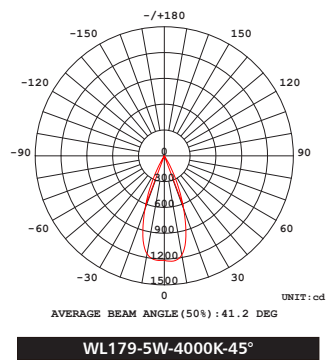
It is designed for indoor and semi-outdoor lighting applications such as residential, hotel, yards, porches, stairways etc.



PRODUCT DIMENSION



OPTICS



BASIC INFORMATION

Housing Material	Die-Casting Aluminium
Product Finishing	Black RAL9005/ White RAL9016/ Gray RAL7015
Optic Material	PC
Light Source	COB
SDCM	<6
CRI	≥80
Lifetime(hr)	50,000h
LED Driver	Built-in, Flicker Free
Installation	Wall mount
Electrical Class	Class I
Operating Temp(°C)	-20°C~45°C
Storage Temp(°C)	-20°C~65°C
Glow Wire Test(°C)	750°C

FEATURES & BENEFITS

General Efficacy	100LM/W
CCT Selection DIP Switch	2-CCT
Watt Selection DIP Switch	NO
Dimming Option	Triac
Functions	-
UGR	-
Ingress Protection(IP Rating)	IP65
Impact Resistance(IK Rating)	IK03
Certification	CE

TECHNICAL DATA SHEET

CODE			WL179-5W-D	WL179-8W-D
Dimension(mm)			L125*W125*H60	L205*W125*H60
Cutout(mm)			-	
Watt(W)			1X5W	2X4W
Input Voltage			AC220-240V	
LED Module Input			DC33-38V	
Light Source			COB	
CCT(K)			1-CCT: 3000K / 4000K 2-CCT: 3000K + 4000K	
CCT Selection DIP Switch			YES	
Luminous Flux (lm) ±5% CRI80	1-CCT	Non-DIM	-	
		DIM	510-550	800-890
	2-CCT	Non-DIM	-	
		DIM	496-540	756-870
Beam Angle(°)			45°	
UGR			-	
Dimming Option			Triac	
Sensor			NO	
Emergency			NO	
Product weight(Kg)	N.W/PC	0.58	0.96	
	G.W/PC	0.63	1.02	
Package weight(Kg)	N.W/CTN	10.44	11.52	
	G.W/CTN	8.15	12.85	
Qty/CTN(PCS)		18	12	
Carton Size(cm)		44.*30.5*26.5	46.5*30.5*26.5	
20GP(pcs)		13824	8064	
40HQ(pcs)		31266	18576	

