

**AL65D      20J    IK10    IP65**

---

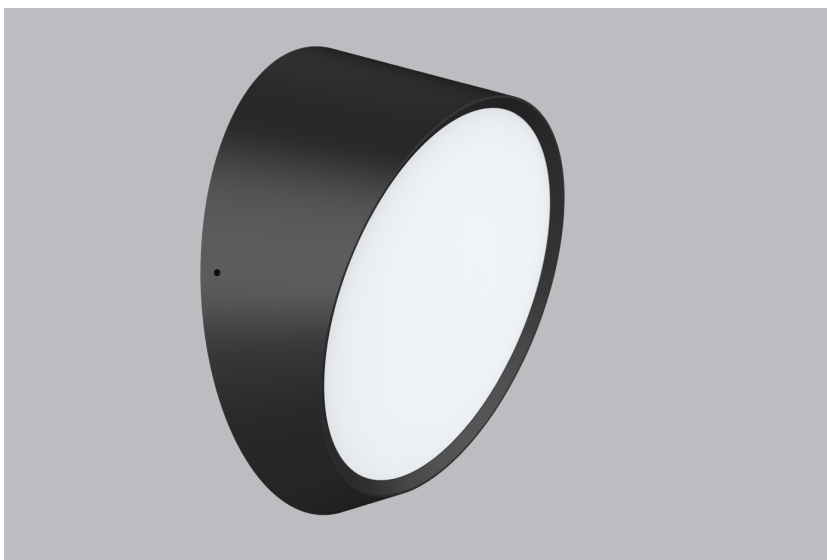
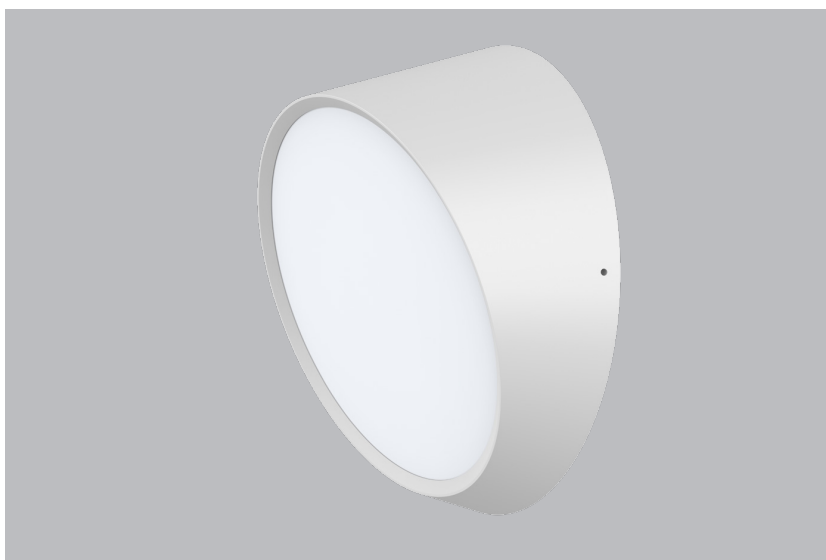
The lamp body and base of this bulkhead are made of alloy ADC12, and the transparent impact-resistant PC cover can reach the protection of IK10(20 joules of energy). Lamp structure is silicone ring with screws fixed to ensure the waterproof level of IP65.



LED CEILING LIGHT

---





## FEATURES

- 110° wide beam angle, 20° polarization
- Impact resistance rating: IK10 (20 joules of energy)
- Ingress protection rating: IP65
- Interchangeable CCT with slide switch
- Quick install with loop in/out hole
- Replaceable driver for better maintenance

## Applications

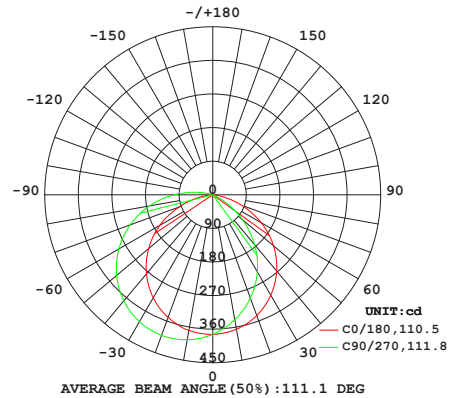
It is designed for public areas such as stations, parks, pathways, driveways, underpasses, canopies and parking lots.



## TECHNICAL

Materials of Optics	PC
Materials of Housing	Aluminum Die-casting
Light Source	SMD(SDCM<6)
CRI	≥80
Lifetime(hr)	50,000h
Product Finishing	White RAL9016/ Black RAL9005

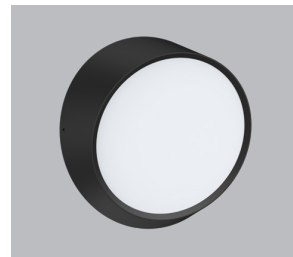
## OPTICS



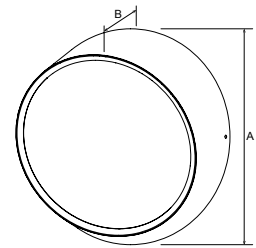
## FEATURES & BENEFITS

CCT Selection DIP Switch	3CCT
LED Driver	Built-in
Dimming Option	-
Functions	-
Ingress Protection (IP Rating)	IP65
Impact Resistance (IK Rating)	IK10
Power Factor (PF)	≥0.9
Certification	RoHS/ CE

## INSTALLATION & ACCESSORIES



Wall mount



## TECHNICAL DATA SHEET

Code No.			AL65D-10-15W
Dimension(mm)			Ø250*116
Cutout (mm)			-
Watt(W)			15W
Light Source			SMD
CCT(K)			1-CCT: 3000K / 4000K / 5000K / 5700K    3-CCT: 3000K + 4000K + 5700K
CCT Selection DIP Switch			YES
Luminous Flux (lm) ±5%	1-CCT	Non-DIM	1130-1400
		DIM	1100-1300
	3-CCT	Non-DIM	1130-1400
		DIM	1100-1300
Beam Angle (°)			110°
UGR			-
N.W/PC(KG)			1.1
G.W/CTN(KG)			17.4
Qty/CTN (PCS)			12
Carton Size(mm)			530*530*400