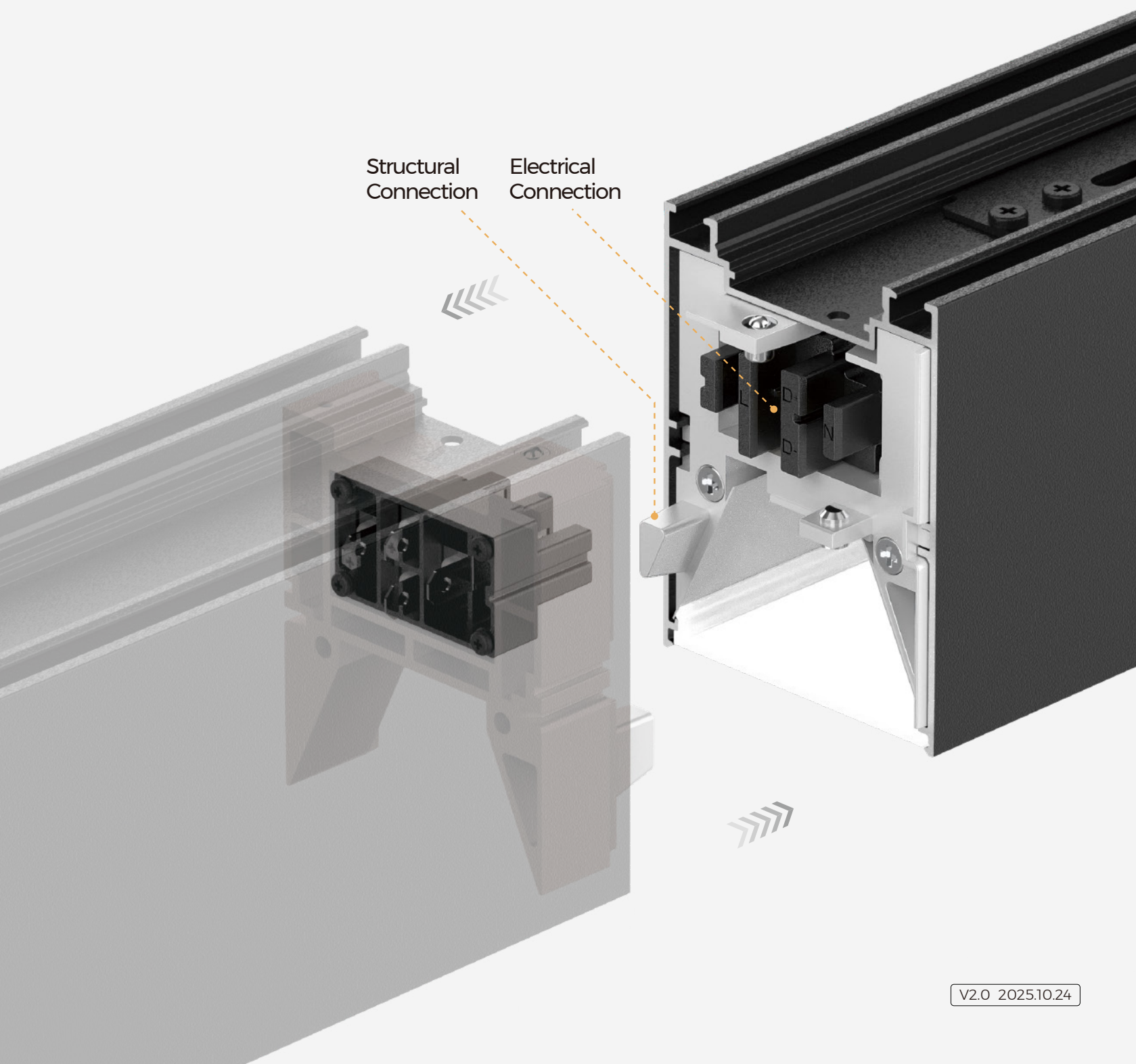


LINE LINK

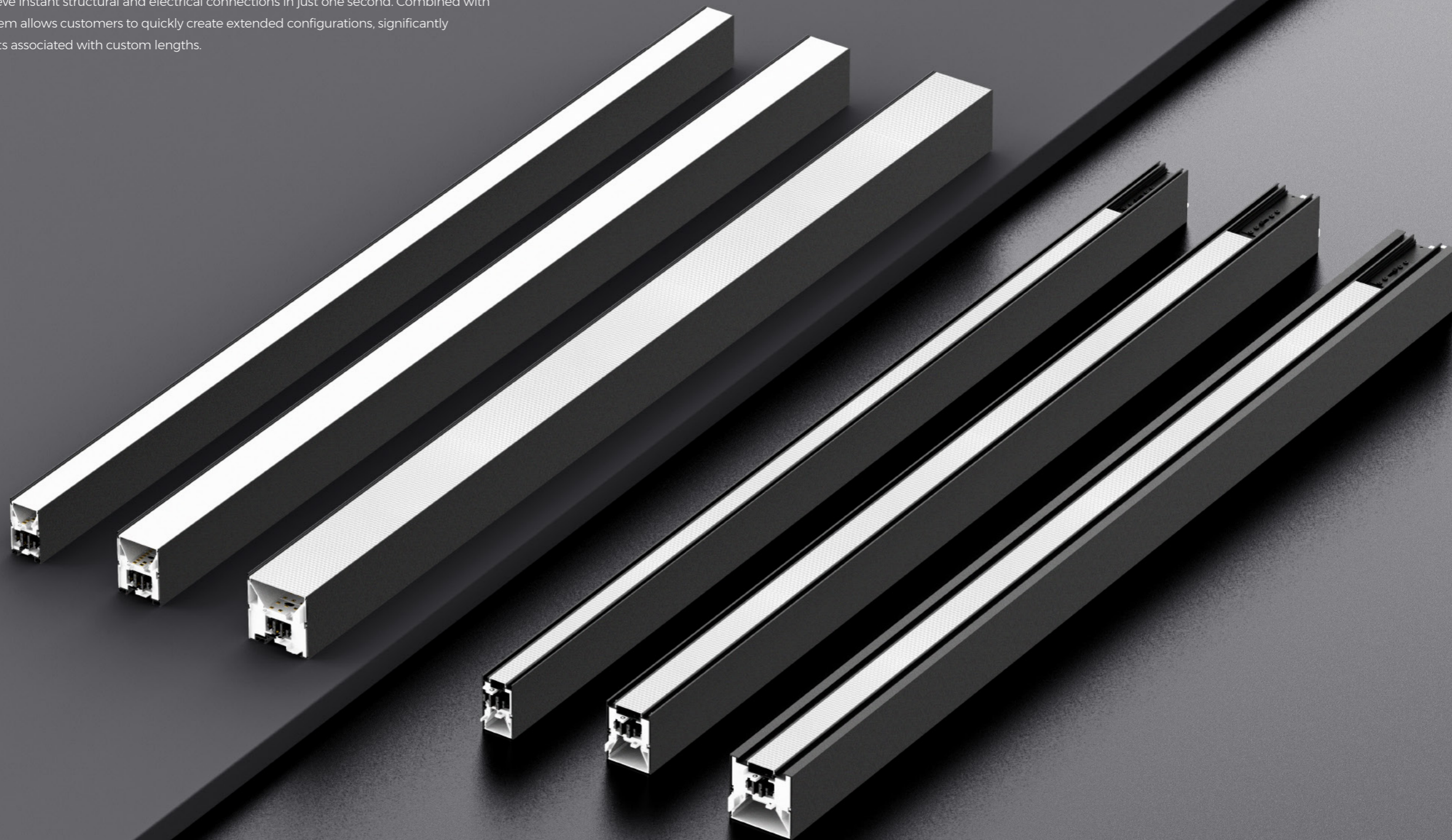
QUICK CONNECT LIGHTING



CREATING AN IDEAL LIGHTING SPACE FOR THE WORLD

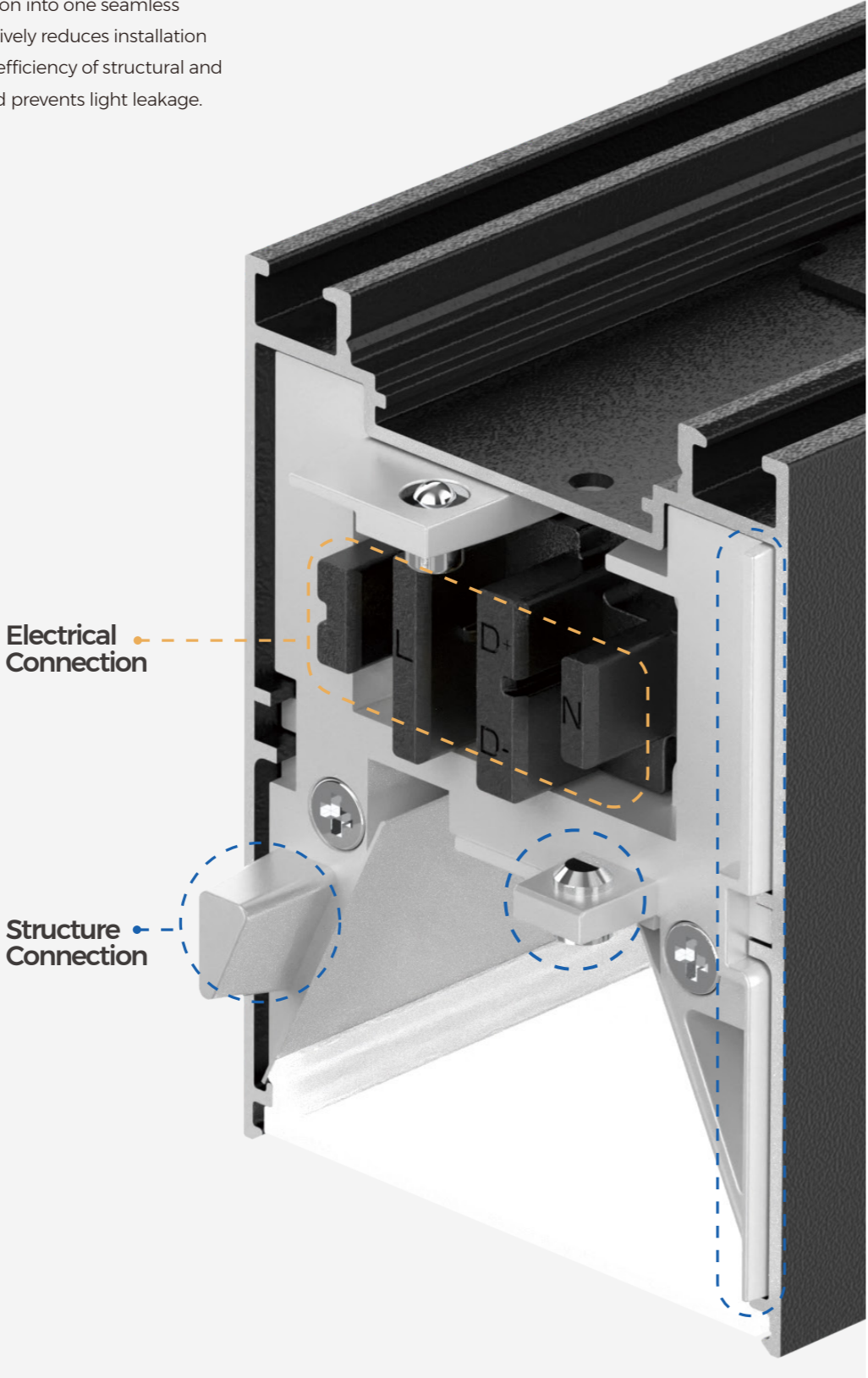
Quick Connect lighting Solution

The LINE LINK Quick Connect lighting system features an innovative quick-connect end cap design, making the structural and electrical connections between fixtures simple and efficient. With a simple plug-and-play mechanism, users can achieve instant structural and electrical connections in just one second. Combined with its modular design, this system allows customers to quickly create extended configurations, significantly reducing the additional costs associated with custom lengths.



Innovative Quick-Connect End Cap Design

Integrating structural assembly, electrical connections, and light leakage prevention into one seamless solution, this design effectively reduces installation complexity, improves the efficiency of structural and electrical connections, and prevents light leakage.



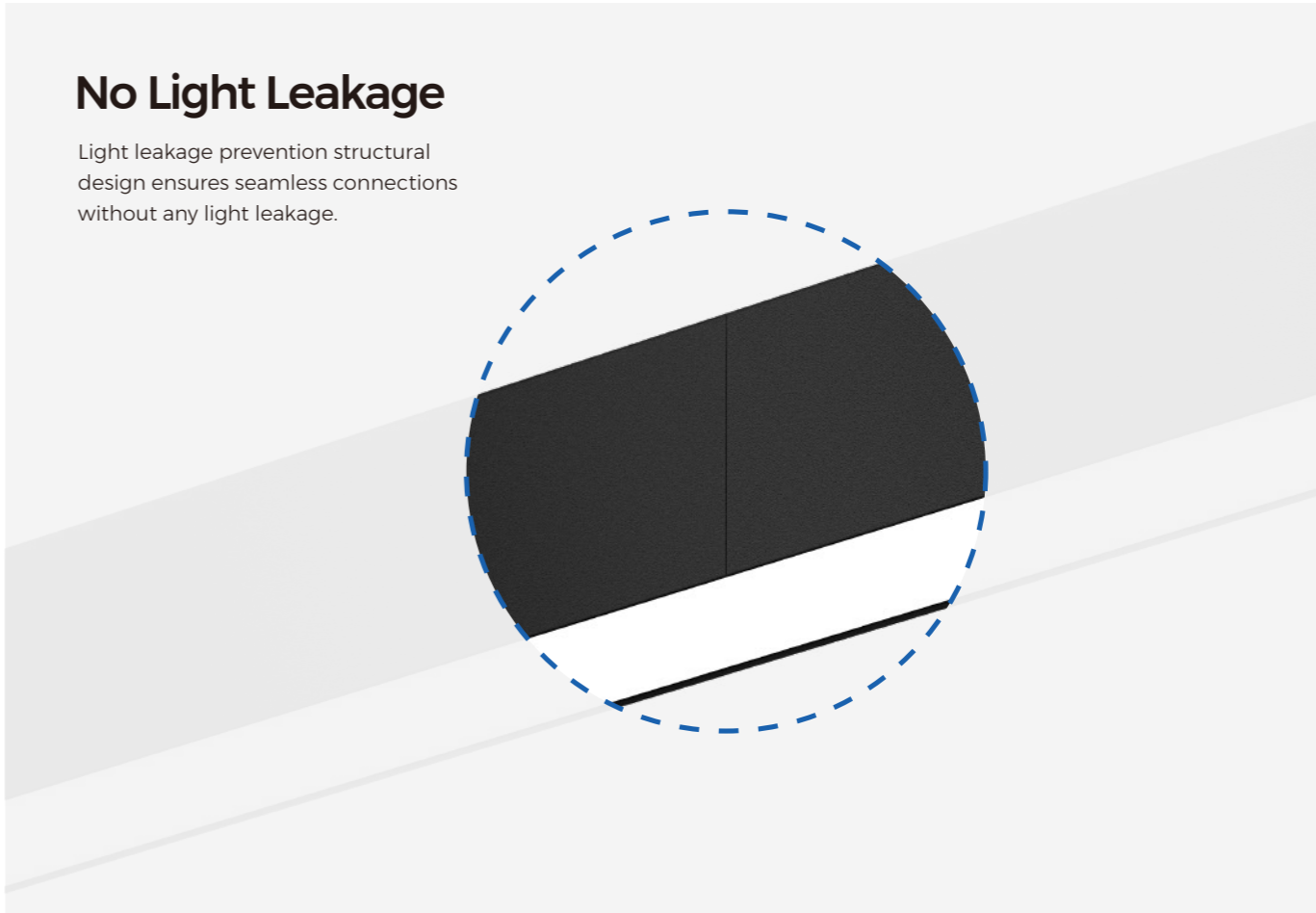
1-Second Connection

1-second structural and electrical connection, saving over 90% of the construction time compared to traditional methods (structural & electrical connection).



No Light Leakage

Light leakage prevention structural design ensures seamless connections without any light leakage.



Ultra Long Application

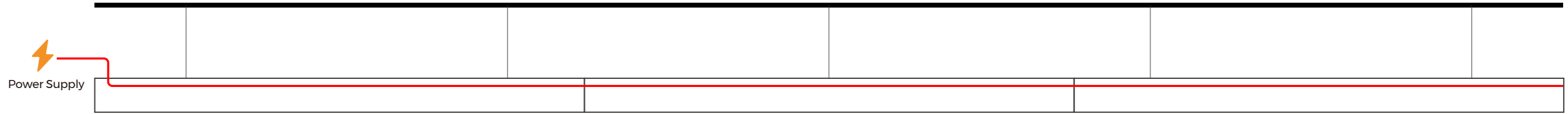
LINE LINK QUICK CONNECT LIGHTING


With modular design, customers can quickly implement ultra-long applications, significantly reducing the additional costs associated with custom lengths.



Ultra-Long Single-End Power in

The quick-connect lighting design supports a maximum cascading length of 40 meters, significantly reducing wiring and connection labor costs. It enhances the installation efficiency of lighting and electrical connections, while also shortening project construction time.



 It does not support dual-end power supply, and there is a potential danger of short circuit.



Mainstream Size Options

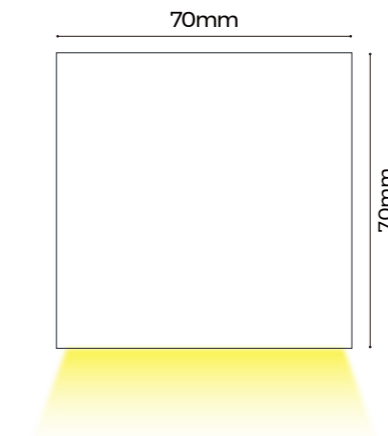
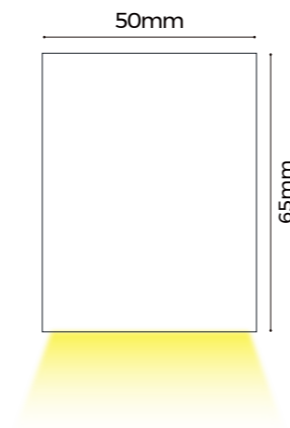
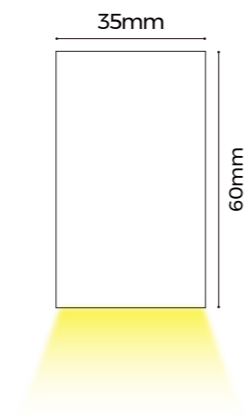
Offering mainstream size options of 35/50/70mm, catering to various spatial dimensions, ensuring both aesthetic appeal and practicality of the luminaires.

35mm

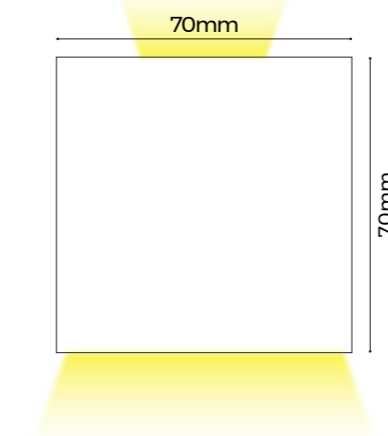
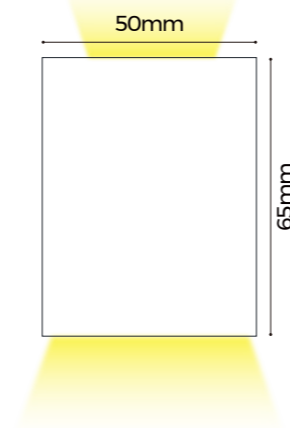
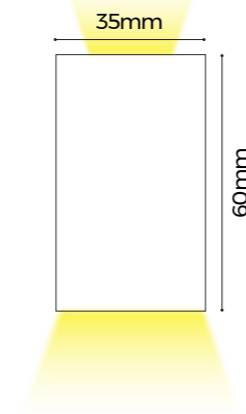
50mm

70mm

Pendant &
Surface Mounted



Pendant
Up & Down lighting



Multiple Types Of Luminaires

Available in a variety of mounting options, including surface-mounted and pendant, it can be adapted to the different needs of any type of space and greatly enhanced flexibility. Whether it's a commercial office space, home décor or public space, you'll find the right installation for you.



Pendant

Pendant
Up & Down lighting

Surface mounted



Diffuser
High-Efficiency
Up to 150LM/W

Prismatic
Low-Glare
UGR ≤ 19
Up to 135LM/W

Extra-Long Flexible Diffuser

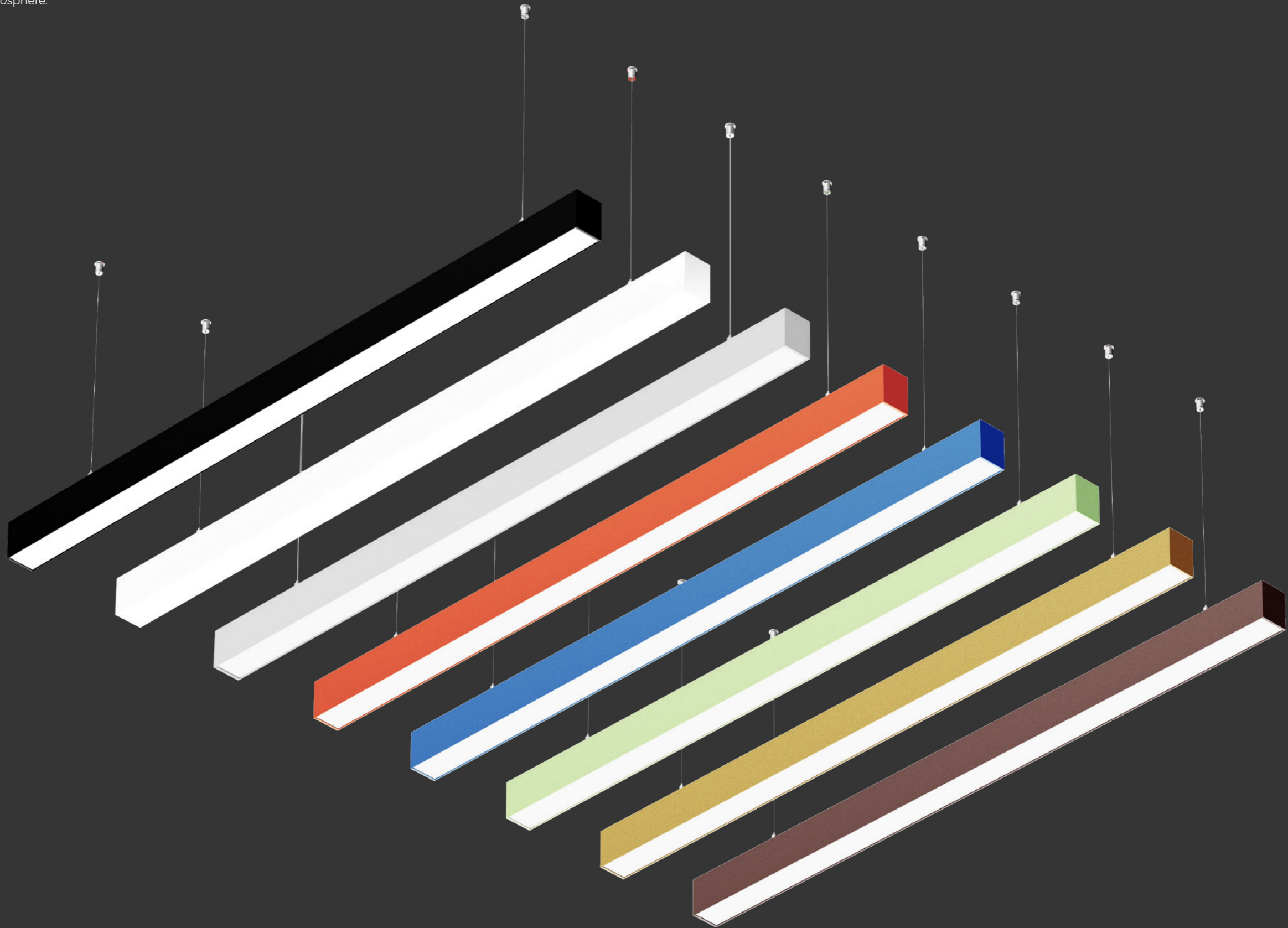
Available in 50M options, designed for extended applications with continuous, uninterrupted lighting.



Diverse Color Options

Available in a variety of colours, they can be freely combined according to the décor style and personal preferences to create the ideal lighting atmosphere.

- Matt black
- Matt white
- Silver
- Matt Orange
- Matt blue
- Matt green
- Matt yellow
- Rose gold



Multiple Dimming Method

Outfitted with slim and high-quality power supply, Perfectly built in linear luminaire, achieves free light tuning.

LIFUD[®]

Brand Power



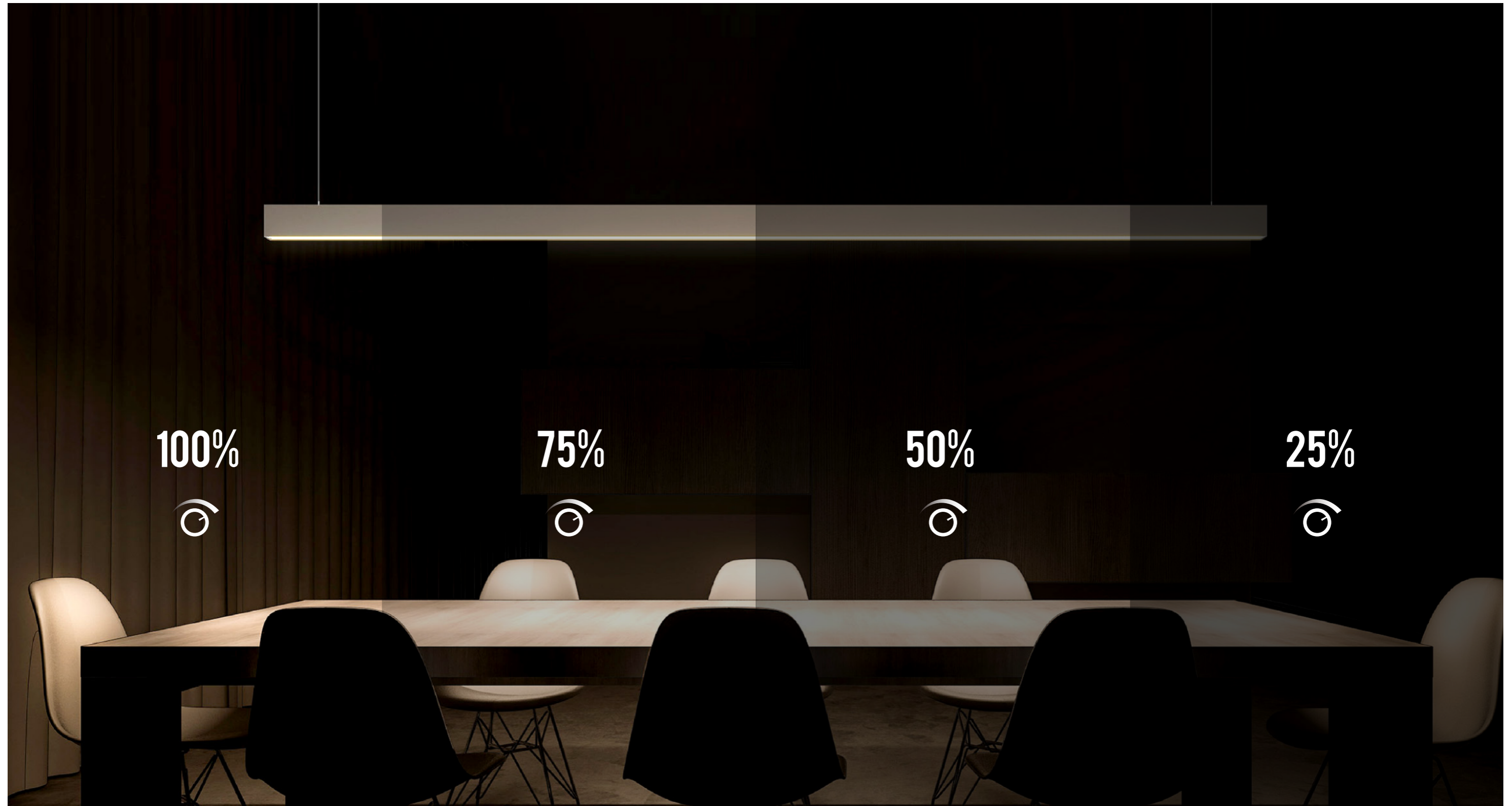
Non-Dimming



1-10V Dimming

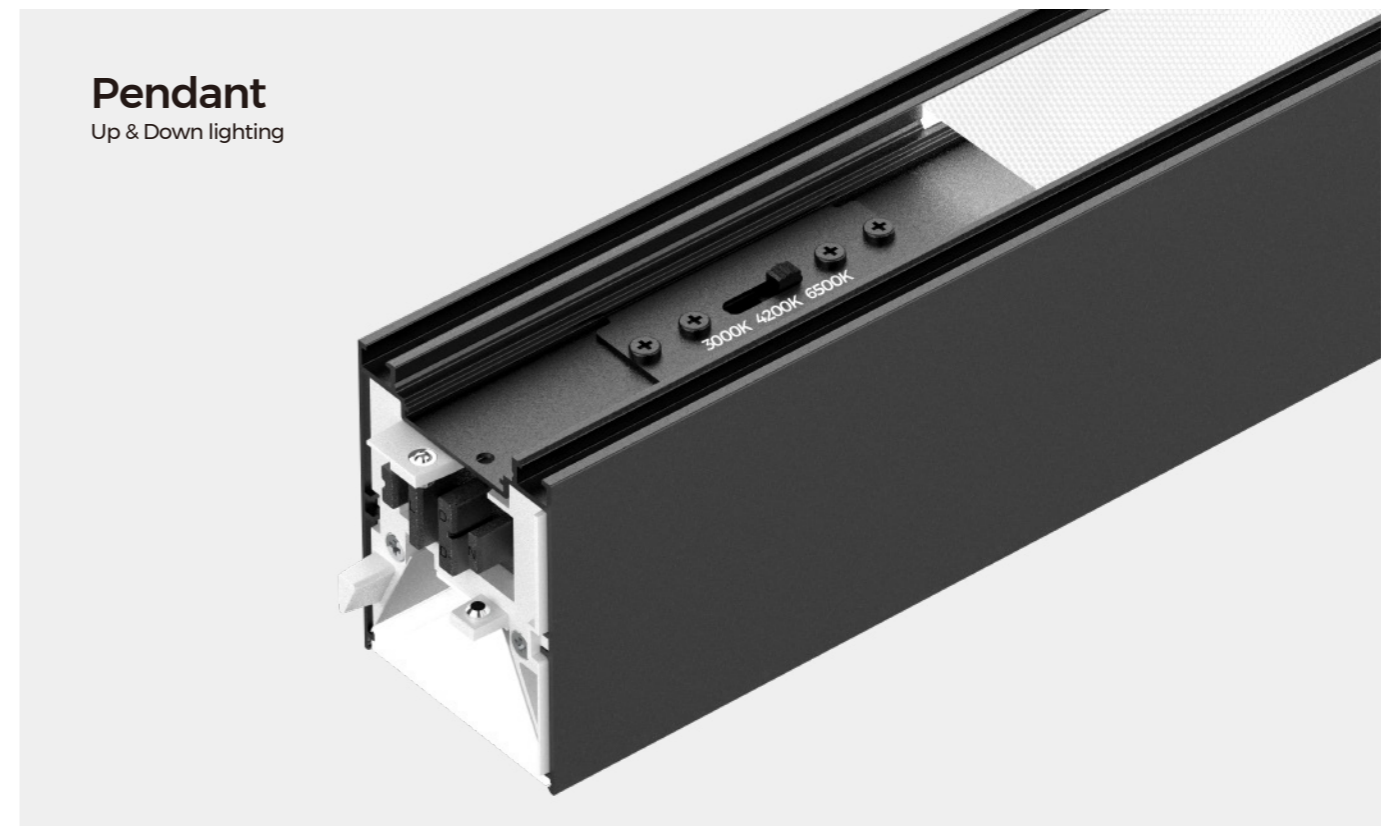
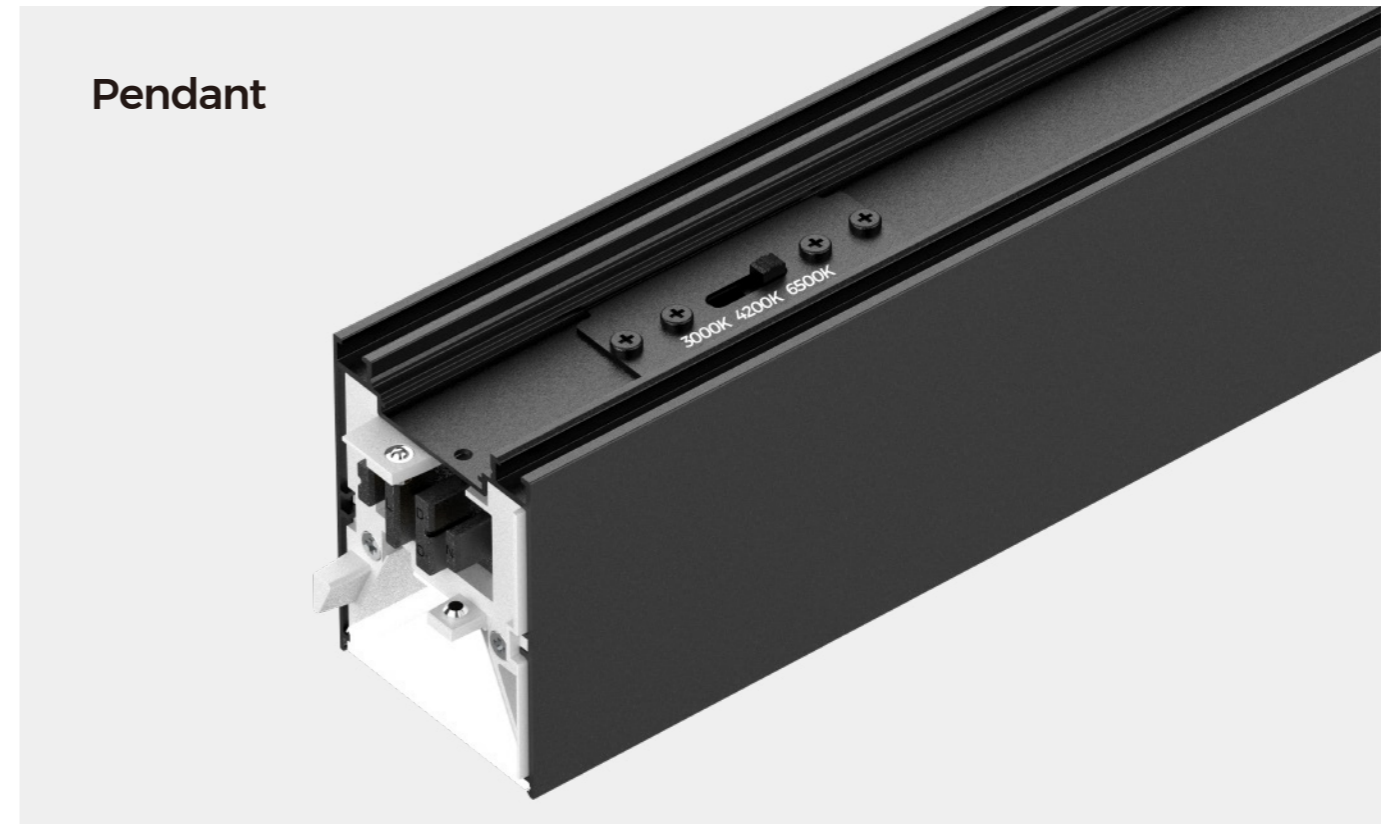


DALI Dimming



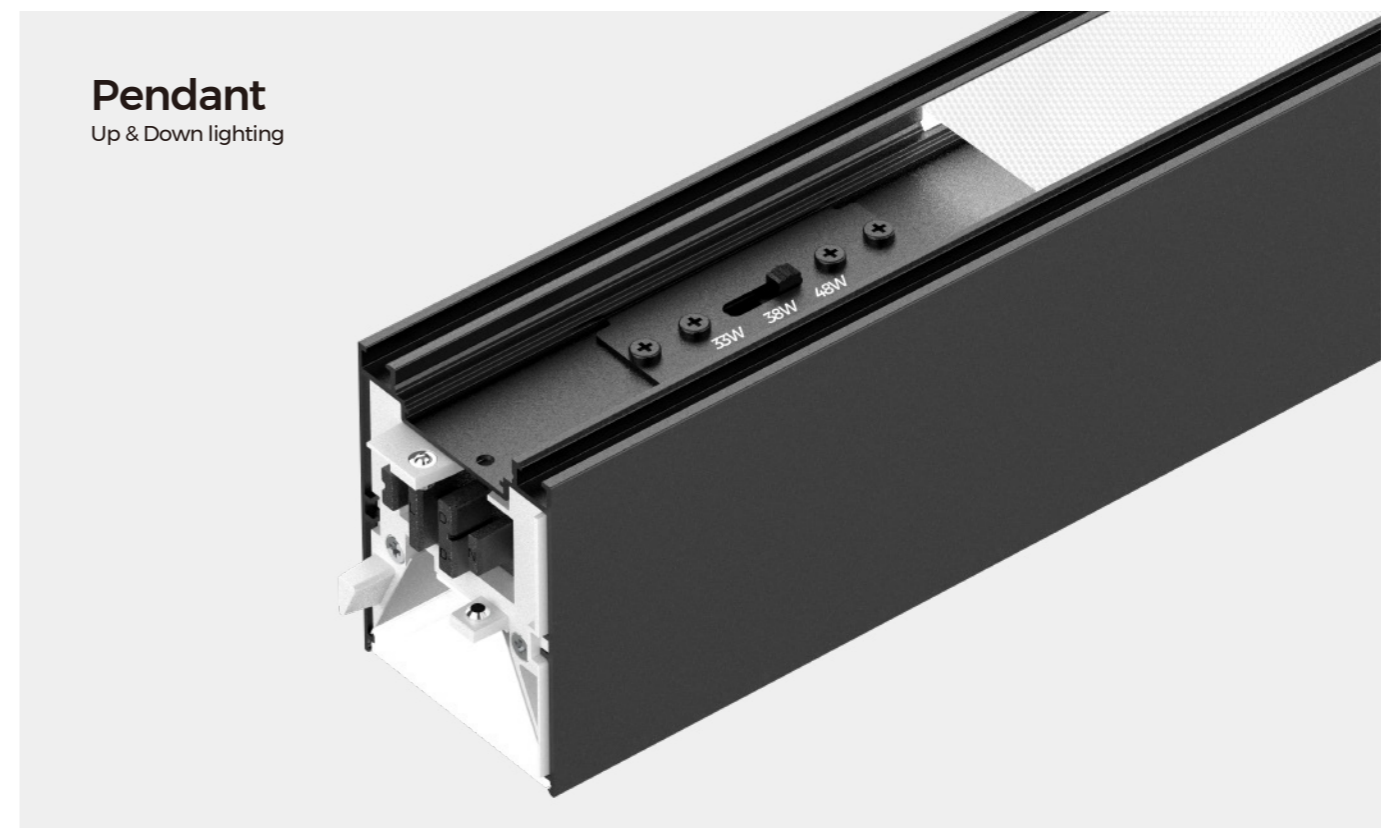
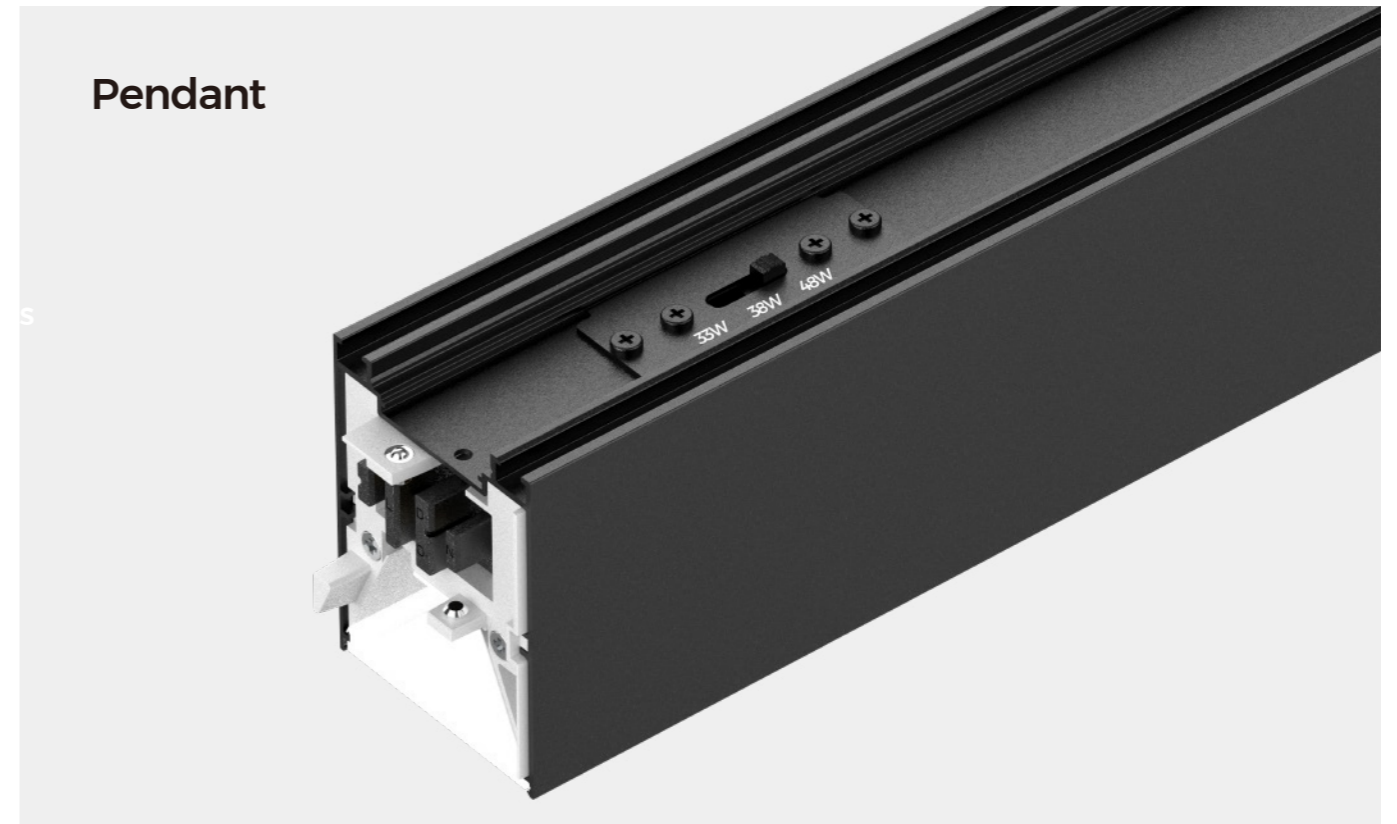
DIP Switch For Color Temperature Adjustment

The lamp supports three color temperature adjustments to meet a variety of lighting needs. Switch the color temperature as you like, and be flexible. Reduce the pressure of backup.



DIP Switch For Power Adjustment

It supports three-level power regulation, allowing users to freely switch the power of the lamps to meet brightness requirements in different scenarios. The operation is flexible and convenient, significantly reducing inventory pressure.



Certification & Warranty

Handpicked international brand LUMILEDS, LM80, CE, UKCA certified, 5-year warranty.

SDCM \leq 3



Brand LEDs

LUMILEDS

High CRI

CRI $>$ 80

CRI $>$ 90



Product Overview

Width

Pendant & Surface Mounted

Pendant (Up & Down)

35mm

MS35FD

MS35FP

MH35FD

MH35FP



Diffuser

Prismatic
Diffuser

Diffuser

Prismatic
Diffuser

50mm

MS50FD

MS50FP

MH50FD

MH50FP



Diffuser

Prismatic
Diffuser

Diffuser

Prismatic
Diffuser

70mm

MS70FD

MS70FP

MH70FD

MH70FP



Diffuser

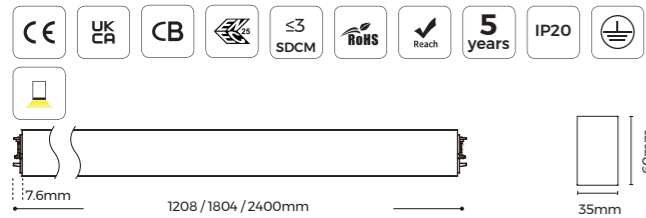
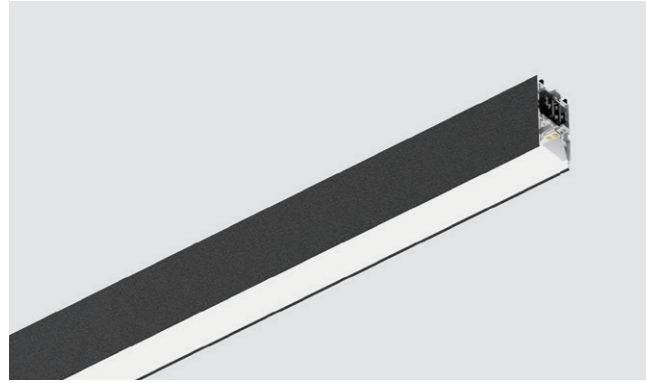
Prismatic
Diffuser

Diffuser

Prismatic
Diffuser

MS35FD

Diffuser



Basic Parameters

Installation	Pendant, Surface mounted
Material	AL6063-T5
Coating	Black / White (Spraying)
Control	ON/OFF / 1-10V / DALI2+PUSH

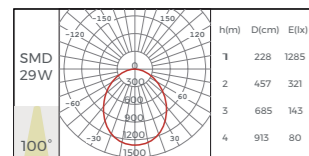
Luminaire Parameters

Input voltage	AC220-240V	
CRI	80 / 90	
CCT	2700K / 3000K / 4000K / 6500K / 3CCT Dial Switch ^①	
Length (mm)	1200 / 1800 / 2400	
Regular	Power(W)	29 / 45 / 58
	Lumen(LM)	3190 / 4950 / 6380
High-efficiency	Power(W)	22 / 33 / 44
	Lumen(LM)	3080 / 4620 / 6160
Light efficiency(LM/W)	110 / 140	

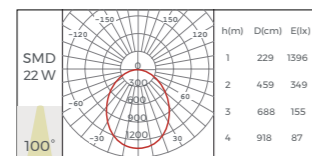
* The above parameters are based on Ra80, 4000K white luminaires.

① The color temperature range of the 3CCT dial switch is 3000K / 4200K / 6500K

Light Distribution - Regular

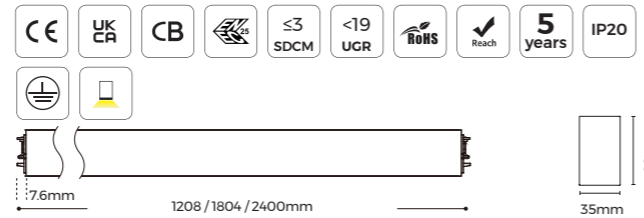
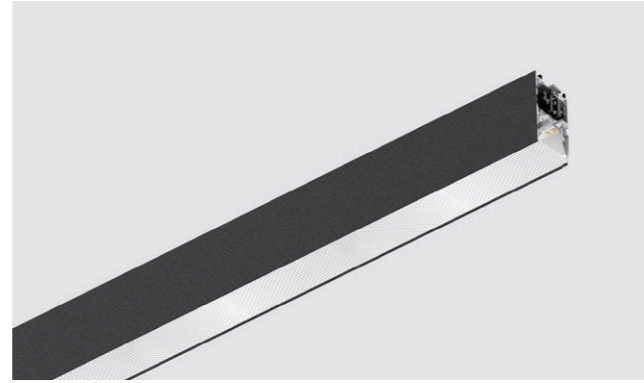


Light Distribution - High efficiency



MS35FP

Prismatic



Basic Parameters

Installation	Pendant, Surface mounted
Material	AL6063-T5
Coating	Black / White (Spraying)
Control	ON/OFF / 1-10V / DALI2+PUSH

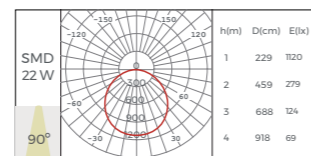
Luminaire Parameters

Input voltage	AC220-240V	
CRI	80 / 90	
CCT	2700K / 3000K / 4000K / 6500K / 3CCT Dial Switch ^①	
Length (mm)	1200 / 1800 / 2400	
Regular	Power(W)	22 / 33 / 44
	Lumen(LM)	2090 / 3135 / 4180
High-efficiency	Power(W)	22 / 33 / 44
	Lumen(LM)	2640 / 3960 / 5280
Light efficiency(LM/W)	95 / 120	

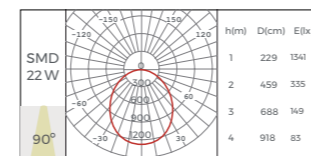
* The above parameters are based on Ra80, 4000K white luminaires.

① The color temperature range of the 3CCT dial switch is 3000K / 4200K / 6500K

Light Distribution - Regular

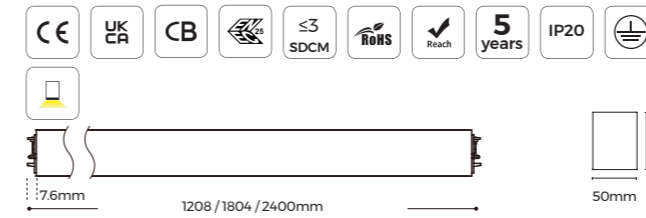
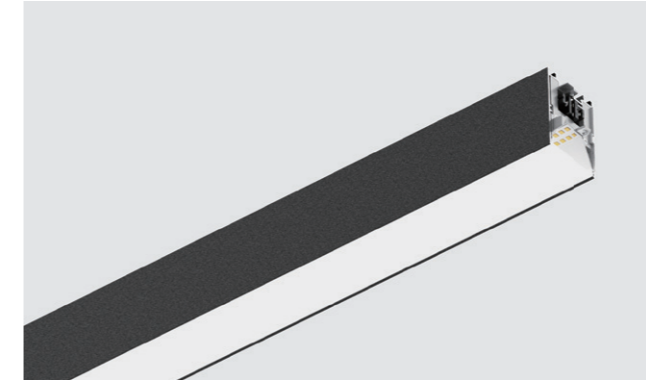


Light Distribution - High efficiency



MS50FD

Diffuser



Basic Parameters

Installation	Pendant, Surface mounted
Material	AL6063-T5
Coating	Black / White (Spraying)
Control	ON/OFF / 1-10V / DALI2+PUSH

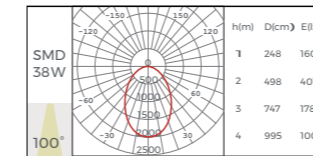
Luminaire Parameters

Input voltage	AC220-240V	
CRI	80 / 90	
CCT	2700K / 3000K / 4000K / 6500K / 3CCT Dial Switch ^①	
Length (mm)	1200 / 1800 / 2400	
Regular	Power(W)	38 / 58 / 76
	Lumen(LM)	4180 / 6380 / 8360
High-efficiency	Power(W)	28 / 42 / 56
	Lumen(LM)	4200 / 6300 / 8400
Light efficiency(LM/W)	110 / 150	

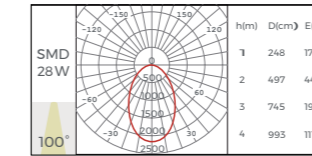
* The above parameters are based on Ra80, 4000K white luminaires.

① The color temperature range of the 3CCT dial switch is 3000K / 4200K / 6500K

Light Distribution - Regular

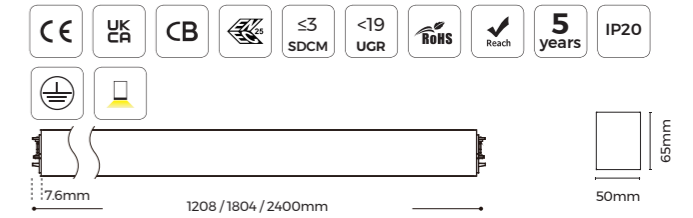
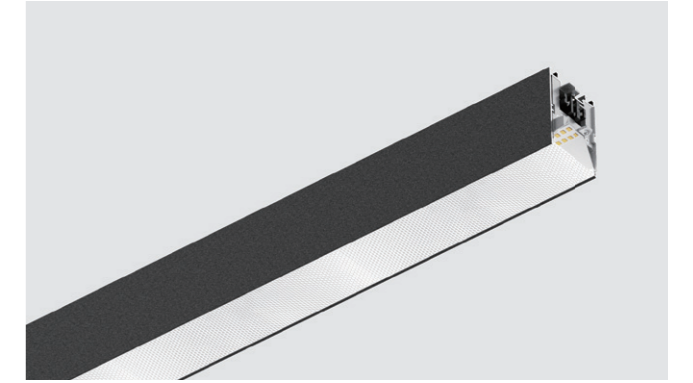


Light Distribution - High efficiency



MS50FP

Prismatic



Basic Parameters

Installation	Pendant, Surface mounted
Material	AL6063-T5
Coating	Black / White (Spraying)
Control	ON/OFF / 1-10V / DALI2+PUSH

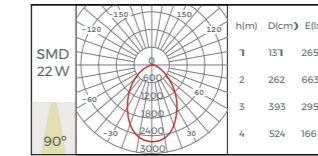
Luminaire Parameters

Input voltage	AC220-240V	
CRI	80 / 90	
CCT	2700K / 3000K / 4000K / 6500K / 3CCT Dial Switch ^①	
Length (mm)	1200 / 1800 / 2400	
Regular	Power(W)	22 / 33 / 44
	Lumen(LM)	2200 / 3300 / 4400
High-efficiency	Power(W)	22 / 33 / 44
	Lumen(LM)	2750 / 4125 / 5500
Light efficiency(LM/W)	100 / 125	

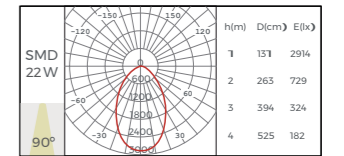
* The above parameters are based on Ra80, 4000K white luminaires.

① The color temperature range of the 3CCT dial switch is 3000K / 4200K / 6500K

Light Distribution - Regular

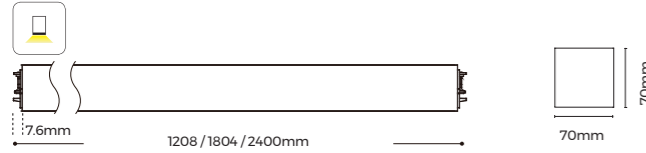
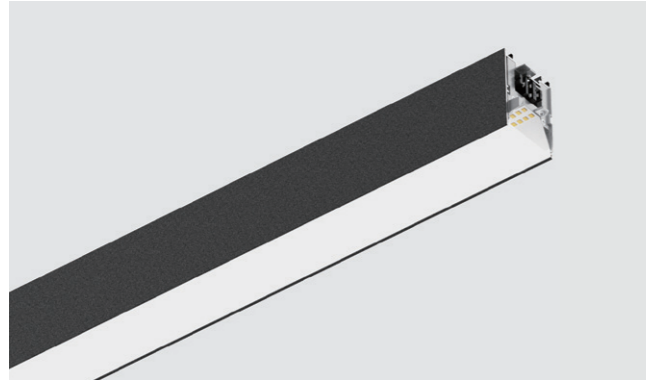


Light Distribution - High efficiency



MS70FD

Diffuser

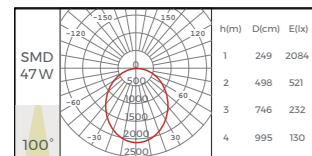


Basic Parameters	
Installation	Pendant, Surface mounted
Material	AL6063-T5
Coating	Black / White (Spraying)
Control	ON/OFF / 1-10V / DALI2+PUSH

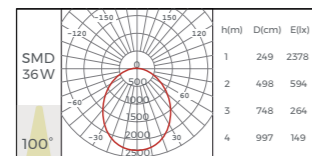
Luminaire Parameters		
Input voltage	AC220-240V	
CRI	80 / 90	
CCT	2700K / 3000K / 4000K / 6500K / 3CCT Dial Switch ^①	
Length (mm)	1200 / 1800 / 2400	
Regular	Power(W)	47 / 70 / 90
	Lumen(LM)	5405 / 8050 / 10350
High-efficiency	Power(W)	36 / 54 / 72
	Lumen(LM)	5400 / 8100 / 10800
Light efficiency(LM/W)	115 / 150	

* The above parameters are based on Ra80, 4000K white luminaires.
 ① The color temperature range of the 3CCT dial switch is 3000K / 4200K / 6500K

Light Distribution - Regular

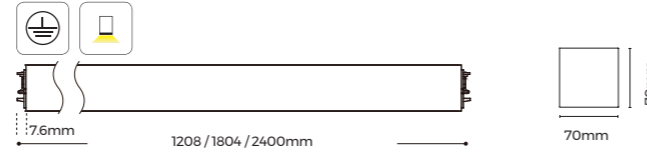
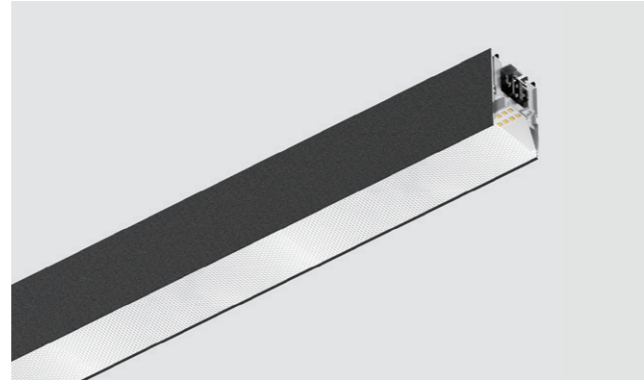


Light Distribution - High efficiency



MS70FP

Prismatic

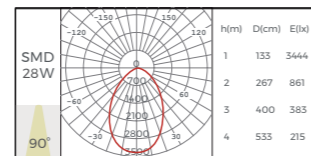


Basic Parameters	
Installation	Pendant, Surface mounted
Material	AL6063-T5
Coating	Black / White (Spraying)
Control	ON/OFF / 1-10V / DALI2+PUSH

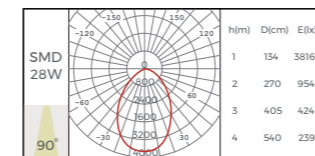
Luminaire Parameters		
Input voltage	AC220-240V	
CRI	80 / 90	
CCT	2700K / 3000K / 4000K / 6500K / 3CCT Dial Switch ^①	
Length (mm)	1200 / 1800 / 2400	
Regular	Power(W)	28 / 42 / 56
	Lumen(LM)	3080 / 4620 / 6160
High-efficiency	Power(W)	28 / 42 / 56
	Lumen(LM)	3780 / 5670 / 7560
Light efficiency(LM/W)	110 / 135	

* The above parameters are based on Ra80, 4000K white luminaires.
 ① The color temperature range of the 3CCT dial switch is 3000K / 4200K / 6500K

Light Distribution - Regular

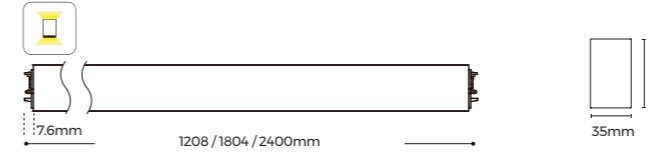
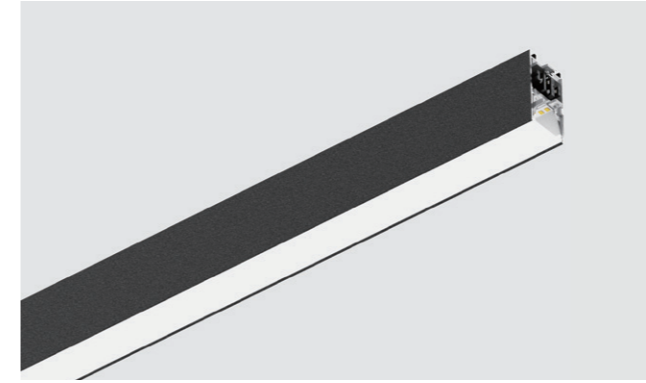


Light Distribution - High efficiency



MH35FD

Diffuser

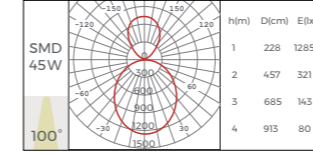


Basic Parameters	
Installation	Pendant
Material	AL6063-T5
Coating	Black / White (Spraying)
Control	ON/OFF / 1-10V / DALI2+PUSH

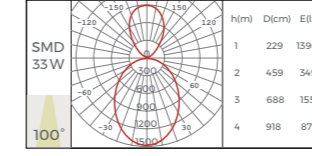
Luminaire Parameters		
Input voltage	AC220-240V	
CRI	80 / 90	
CCT	2700K / 3000K / 4000K / 6500K / 3CCT Dial Switch ^①	
Length (mm)	1200 / 1800 / 2400	
Regular	Power(W)	45 / 67 / 90
	Lumen(LM)	4950 / 7370 / 9900
High-efficiency	Power(W)	33 / 50 / 66
	Lumen(LM)	4620 / 7000 / 9240
Light efficiency(LM/W)	110 / 140	

* The above parameters are based on Ra80, 4000K white luminaires.
 ① The color temperature range of the 3CCT dial switch is 3000K / 4200K / 6500K

Light Distribution - Regular

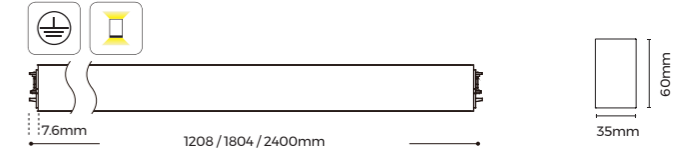
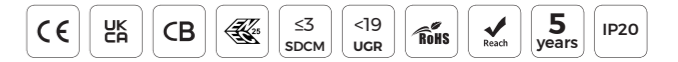
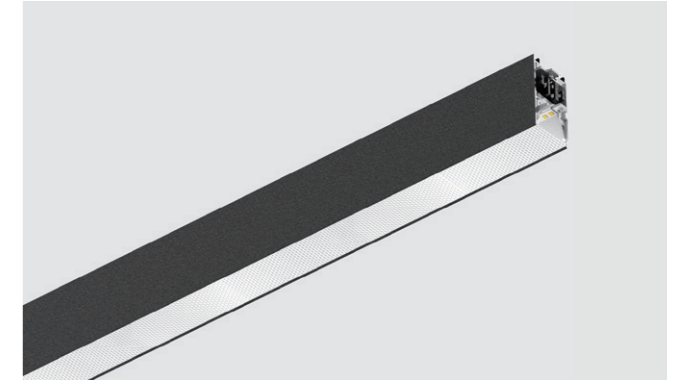


Light Distribution - High efficiency



MH35FP

Prismatic

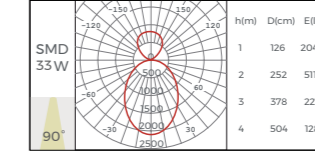


Basic Parameters	
Installation	Pendant
Material	AL6063-T5
Coating	Black / White (Spraying)
Control	ON/OFF / 1-10V / DALI2+PUSH

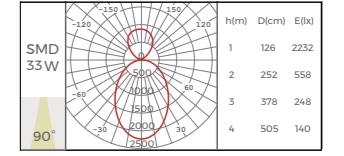
Luminaire Parameters		
Input voltage	AC220-240V	
CRI	80 / 90	
CCT	2700K / 3000K / 4000K / 6500K / 3CCT Dial Switch ^①	
Length (mm)	1200 / 1800 / 2400	
Regular	Power(W)	33 / 49 / 66
	Lumen(LM)	3465 / 5145 / 6930
High-efficiency	Power(W)	33 / 49 / 66
	Lumen(LM)	4125 / 6125 / 8250
Light efficiency(LM/W)	105 / 125	

* The above parameters are based on Ra80, 4000K white luminaires.
 ① The color temperature range of the 3CCT dial switch is 3000K / 4200K / 6500K

Light Distribution - Regular

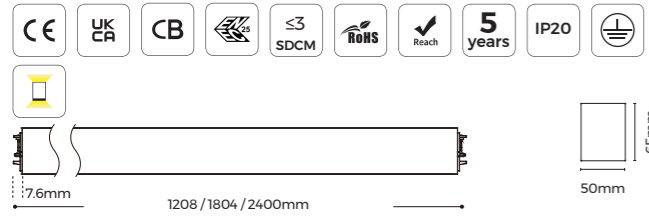
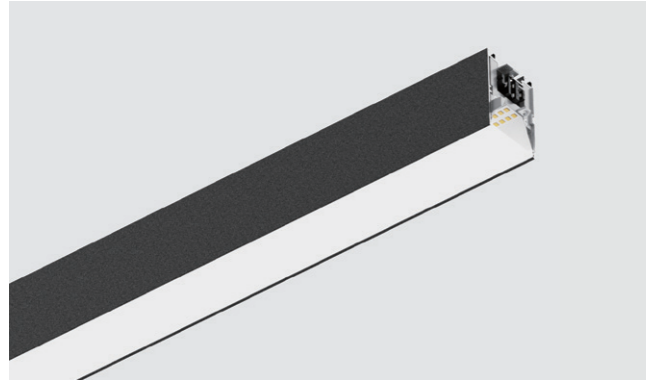


Light Distribution - High efficiency



MH50FD

Diffuser



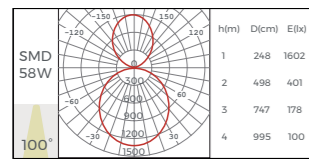
Basic Parameters	
Installation	Pendant
Material	AL6063-T5
Coating	Black /White (Spraying)
Control	ON/OFF /1-10V / DALI2+PUSH

Luminaire Parameters

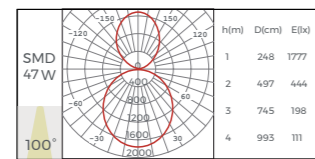
Input voltage	AC220-240V	
CRI	80 / 90	
CCT	2700K / 3000K / 4000K / 6500K / 3CCT Dial Switch ^①	
Length (mm)	1200 / 1800 / 2400	
Regular	Power(W)	58 / 90 / 120
	Lumen(LM)	6380 / 9900 / 13200
High-efficiency	Power(W)	47 / 70 / 86
	Lumen(LM)	7050 / 10500 / 12900
Light efficiency(LM/W)	110 / 150	

* The above parameters are based on Ra80, 4000K white luminaires.
 ① The color temperature range of the 3CCT dial switch is 3000K / 4200K / 6500K

Light Distribution - Regular

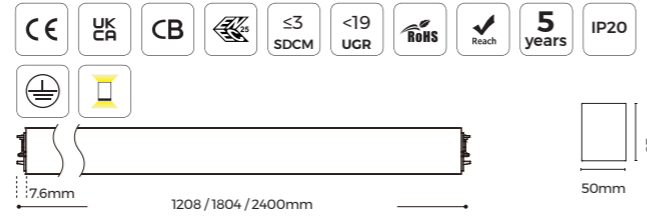
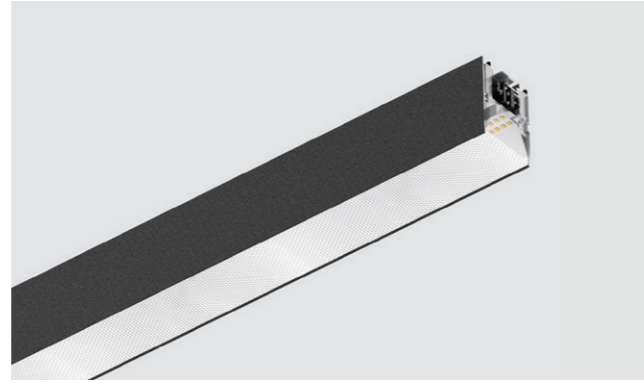


Light Distribution - High efficiency



MH50FP

Prismatic



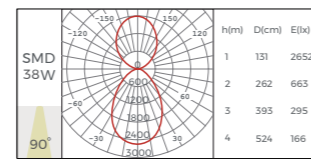
Basic Parameters	
Installation	Pendant
Material	AL6063-T5
Coating	Black /White (Spraying)
Control	ON/OFF /1-10V / DALI2+PUSH

Luminaire Parameters

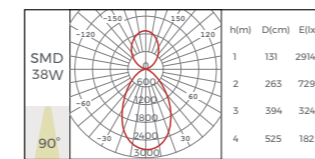
Input voltage	AC220-240V	
CRI	80 / 90	
CCT	2700K / 3000K / 4000K / 6500K / 3CCT Dial Switch ^①	
Length (mm)	1200 / 1800 / 2400	
Regular	Power(W)	38 / 57 / 76
	Lumen(LM)	4180 / 6270 / 8360
High-efficiency	Power(W)	38 / 57 / 76
	Lumen(LM)	4940 / 7410 / 9880
Light efficiency(LM/W)	110 / 130	

* The above parameters are based on Ra80, 4000K white luminaires.
 ① The color temperature range of the 3CCT dial switch is 3000K / 4200K / 6500K

Light Distribution - Regular

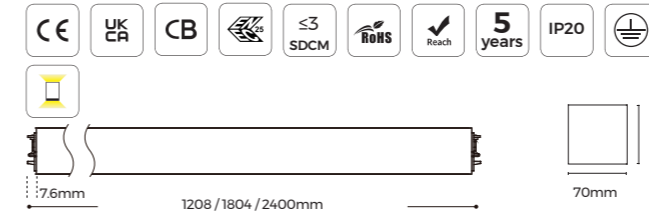
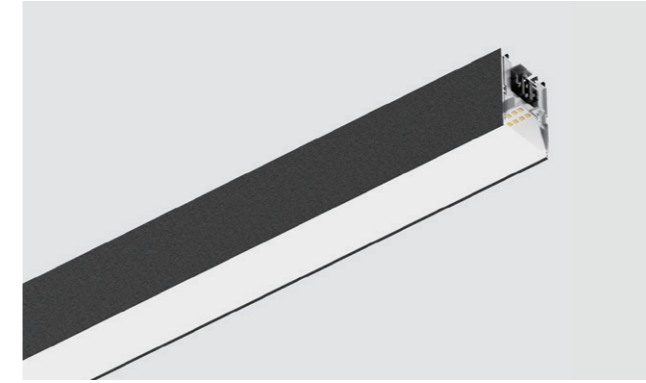


Light Distribution - High efficiency



MH70FD

Diffuser



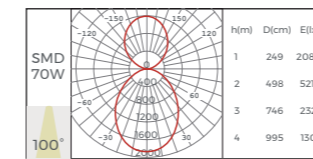
Basic Parameters	
Installation	Pendant
Material	AL6063-T5
Coating	Black /White (Spraying)
Control	ON/OFF /1-10V / DALI2+PUSH

Luminaire Parameters

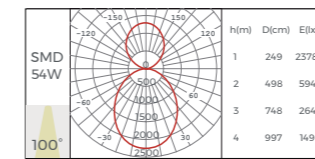
Input voltage	AC220-240V	
CRI	80 / 90	
CCT	2700K / 3000K / 4000K / 6500K / 3CCT Dial Switch ^①	
Length (mm)	1200 / 1800 / 2400	
Regular	Power(W)	70 / 106 / 140
	Lumen(LM)	7700 / 11660 / 15400
High-efficiency	Power(W)	54 / 81 / 108
	Lumen(LM)	8100 / 12150 / 16200
Light efficiency(LM/W)	110 / 150	

* The above parameters are based on Ra80, 4000K white luminaires.
 ① The color temperature range of the 3CCT dial switch is 3000K / 4200K / 6500K

Light Distribution - Regular

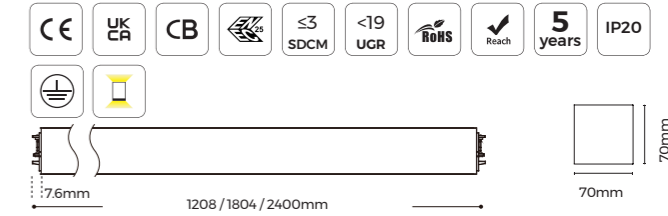
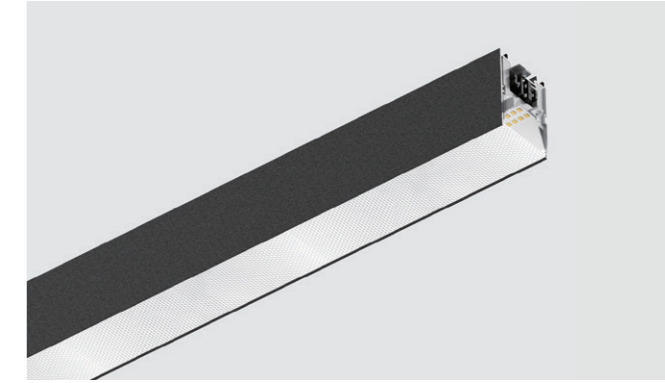


Light Distribution - High efficiency



MH70FP

Prismatic



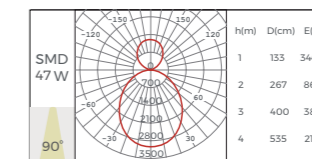
Basic Parameters	
Installation	Pendant
Material	AL6063-T5
Coating	Black /White (Spraying)
Control	ON/OFF /1-10V / DALI2+PUSH

Luminaire Parameters

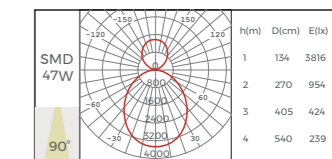
Input voltage	AC220-240V	
CRI	80 / 90	
CCT	2700K / 3000K / 4000K / 6500K / 3CCT Dial Switch ^①	
Length (mm)	1200 / 1800 / 2400	
Regular	Power(W)	47 / 70 / 86
	Lumen(LM)	5170 / 7700 / 9460
High-efficiency	Power(W)	47 / 70 / 86
	Lumen(LM)	6345 / 9450 / 11610
Light efficiency(LM/W)	110 / 135	

* The above parameters are based on Ra80, 4000K white luminaires.
 ① The color temperature range of the 3CCT dial switch is 3000K / 4200K / 6500K

Light Distribution - Regular

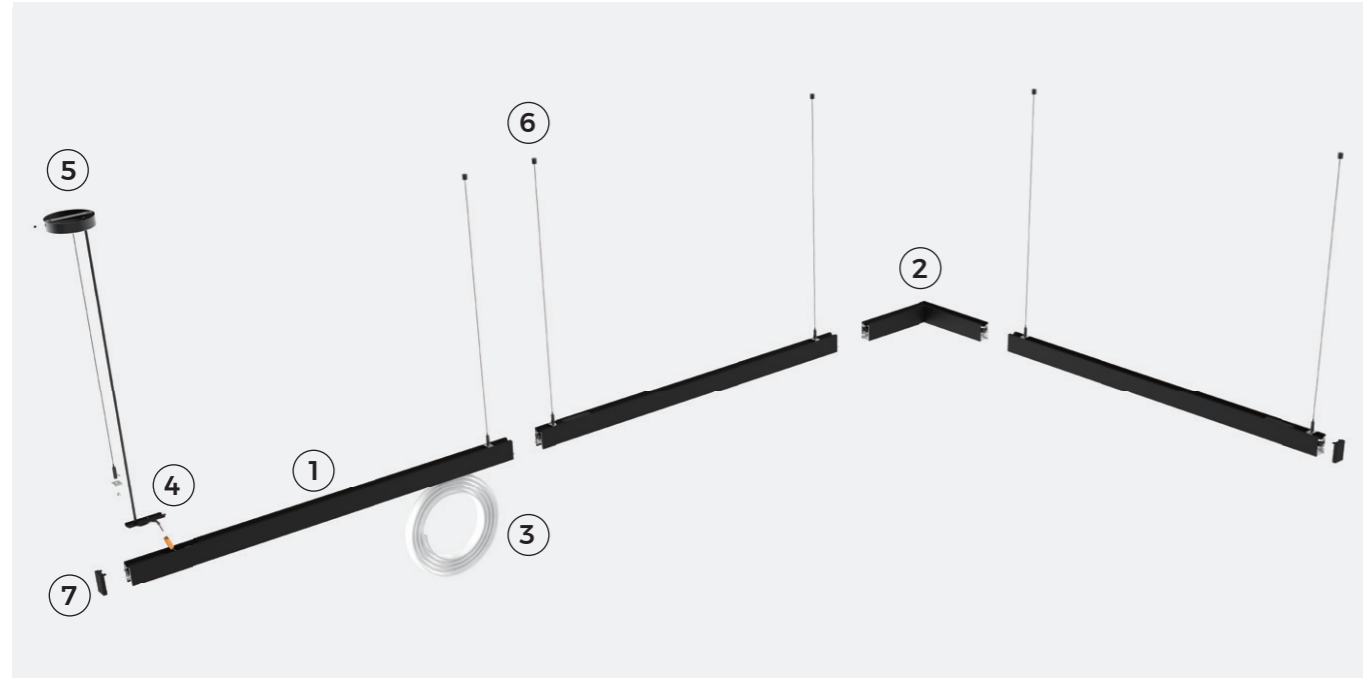


Light Distribution - High efficiency

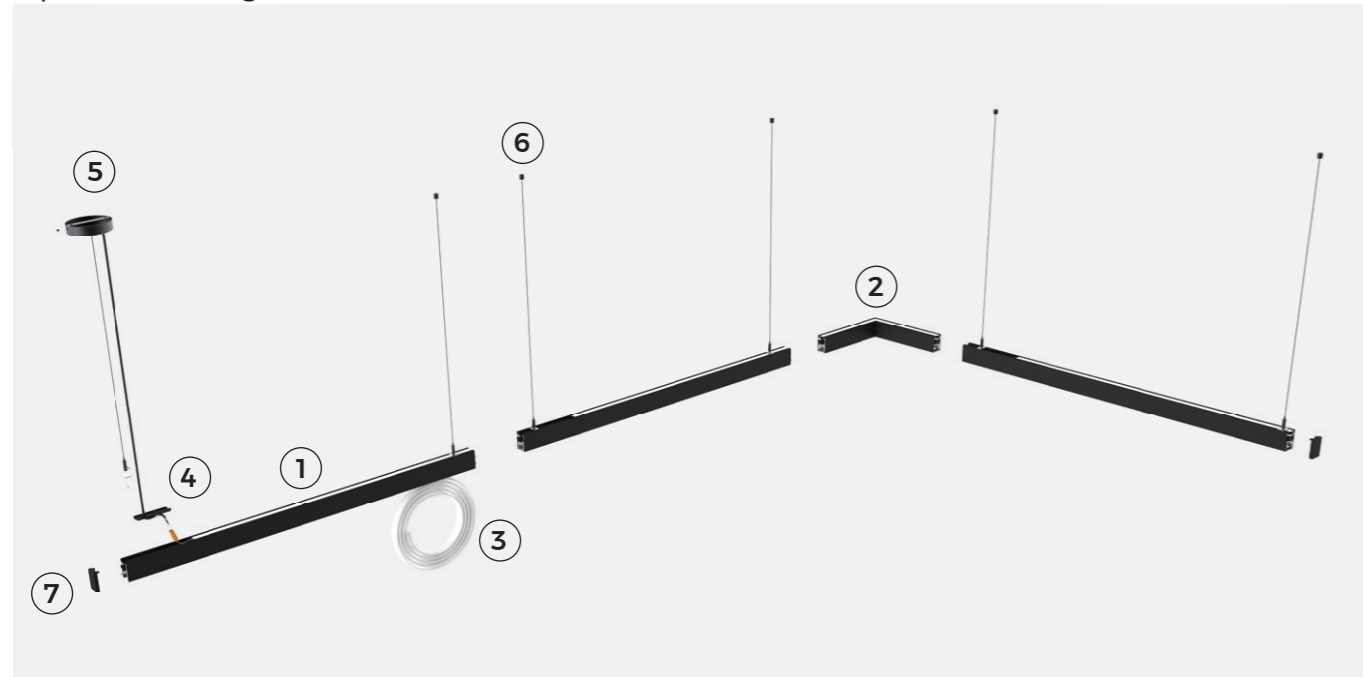


Selection Guidance

Down Lights



Up & Down Lights



- ① Lamp
- ② Corner
- ③ Flexible diffuser
- ④ Input cable
- ⑤ Junction Box(With Steel Wire Rope)
- ⑥ Pendant cable
- ⑦ End cap

Installation Accessories

Junction box	PY(E)-D		Suitable for LINE LINK Series
Pendant cable	PN(E)-D		Suitable for LINE LINK Series
Input Cable(3 pin)	CM-25		Suitable for MS35/MH35
Input Cable(5 pin)	CM-26		Suitable for MS35/MH35
Input Cable(3 pin)	CM-27		Suitable for MS50/MH50/MS70/MH70
Input Cable(5 pin)	CM-28		Suitable for MS50/MH50/MS70/MH70
Flexible diffuser	CV-MS35FD		Suitable for MS35FD/MH35FD
Flexible diffuser	CV-MS50FD		Suitable for MS50FD/MH50FD
Flexible diffuser	CV-MS70FD		Suitable for MS70FD/MH70FD
End cap	EC-MS35		Suitable for MS35/MH35
End cap	EC-MS50		Suitable for MS50/MH50
End cap	EC-MS70		Suitable for MS70/MH70
Standard Corner	MS35FD-L90		Suitable for MS35FD
Standard Corner	MS50FD-L90		Suitable for MS50FD
Standard Corner	MS70FD-L90		Suitable for MS70FD
Standard Corner	MH35FD-L90		Suitable for MH35FD
Standard Corner	MH50FD-L90		Suitable for MH50FD
Standard Corner	MH70FD-L90		Suitable for MH70FD
Standard Corner	MS35FP-L90		Suitable for MS35FP
Standard Corner	MS50FP-L90		Suitable for MS50FP
Standard Corner	MS70FP-L90		Suitable for MS70FP
Standard Corner	MH35FP-L90		Suitable for MH35FP
Standard Corner	MH50FP-L90		Suitable for MH50FP
Standard Corner	MH70FP-L90		Suitable for MH70FP

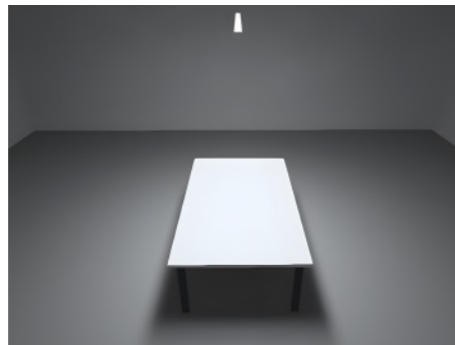
Application Scenarios- Pendant & Ceiling

* The above parameters are based on Ra80, 4000K Light source.

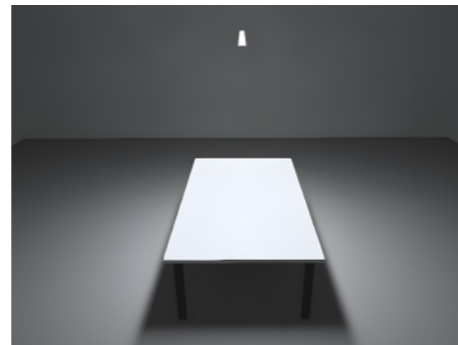
Diffuser

Prismatic

35mm

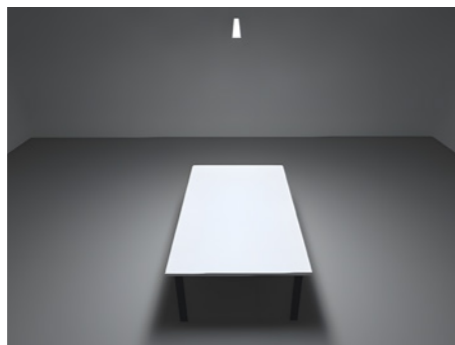


Model	Installation height	Desk center illumination
*MS35FD	3M	300LX

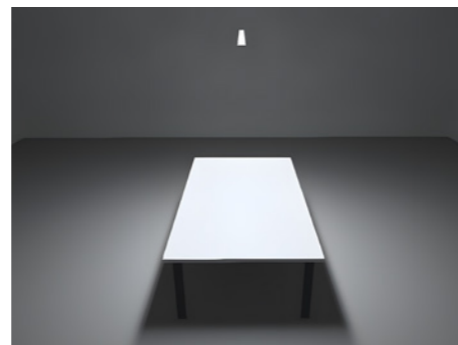


Model	Installation height	Desk center illumination
*MS35FP	3M	300LX

50mm

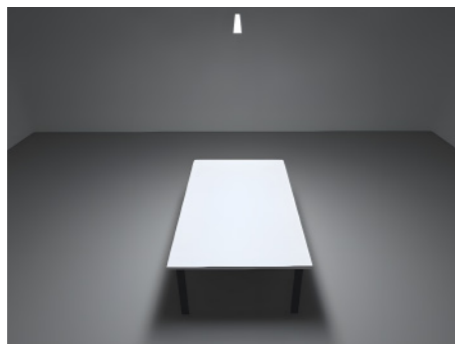


Model	Installation height	Desk center illumination
*MS50FD	3M	350LX

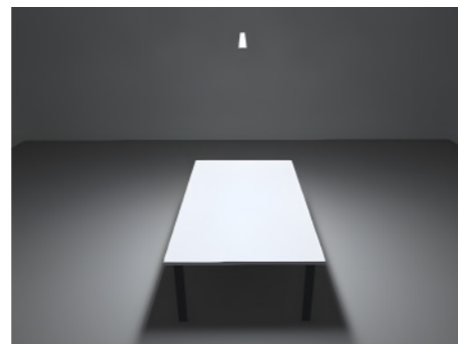


Model	Installation height	Desk center illumination
*MS50FP	3M	350LX

70mm



Model	Installation height	Desk center illumination
*MS70FD	3M	450LX



Model	Installation height	Desk center illumination
*MS70FP	3M	500LX

Simulation Conditions: Office space :8*6m
Room height :3M
Reflection ratio: ceiling: Wall: floor =0.7:0.5:0.2
Desktop height :0.75m
Luminaire installation height :3m

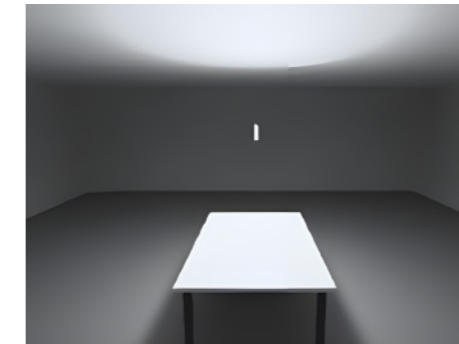
Application Scenarios – Pendant (Up & Down lighting)

*The above parameters are based on Ra80, 4000K Light source.

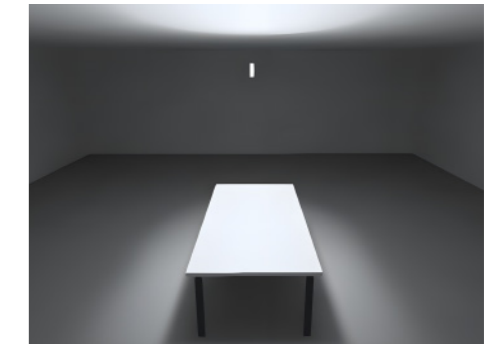
Diffuser

Prismatic

35mm

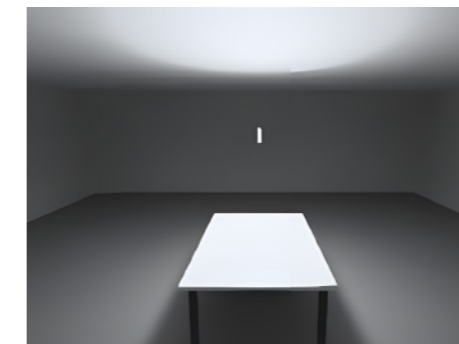


Model	Installation height	Center illuminance (lx)	
		Desktop	Smallpox
*MH35FD	2.5M	500LX	1500LX

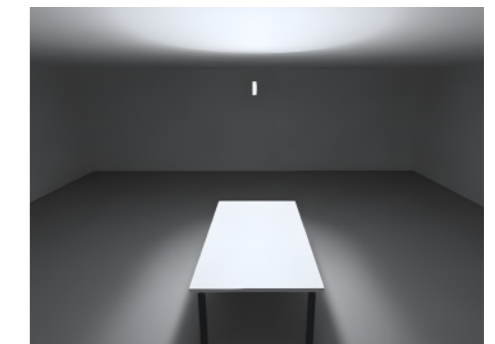


Model	Installation height	Center illuminance (lx)	
		Desktop	Smallpox
*MH35FP	2.5M	500LX	1000LX

50mm

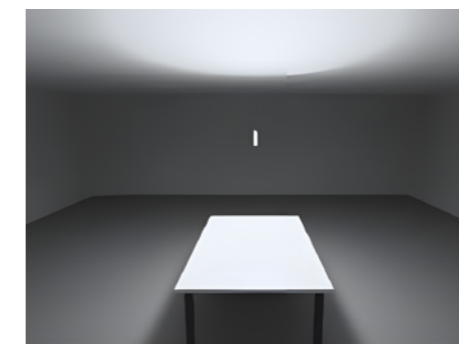


Model	Installation height	Center illuminance (lx)	
		Desktop	Smallpox
*MH50FD	2.5M	550LX	2000LX

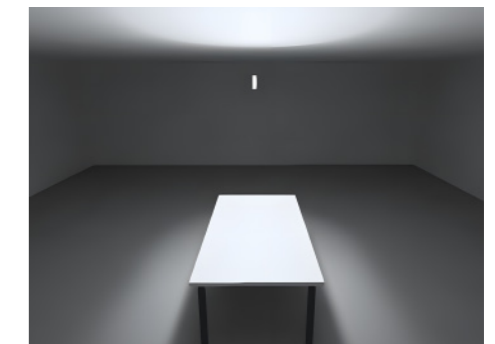


Model	Installation height	Center illuminance (lx)	
		Desktop	Smallpox
*MH50FP	2.5M	600LX	1000LX

70mm



Model	Installation height	Center illuminance (lx)	
		Desktop	Smallpox
*MH70FD	2.5M	700LX	2000LX



Model	Installation height	Center illuminance (lx)	
		Desktop	Smallpox
*MH70FP	2.5M	750LX	1200LX

Simulation Conditions: Office space :8*6m
Room height :3M
Reflection ratio: ceiling: Wall: floor =0.7:0.5:0.2
Desktop height :0.75m
Lighting installation height :2.5m



LED LINEAR &
COMMERCIAL
LIGHTING



Tel: +86-755-2923-1888

E-mail: colors@colorsled.com

Web: www.colorsled.com

Add: 17F, Block B, Building 2, North of Skyworth
Inno Valley, Shiyan town, Bao'an District, Shenzhen