

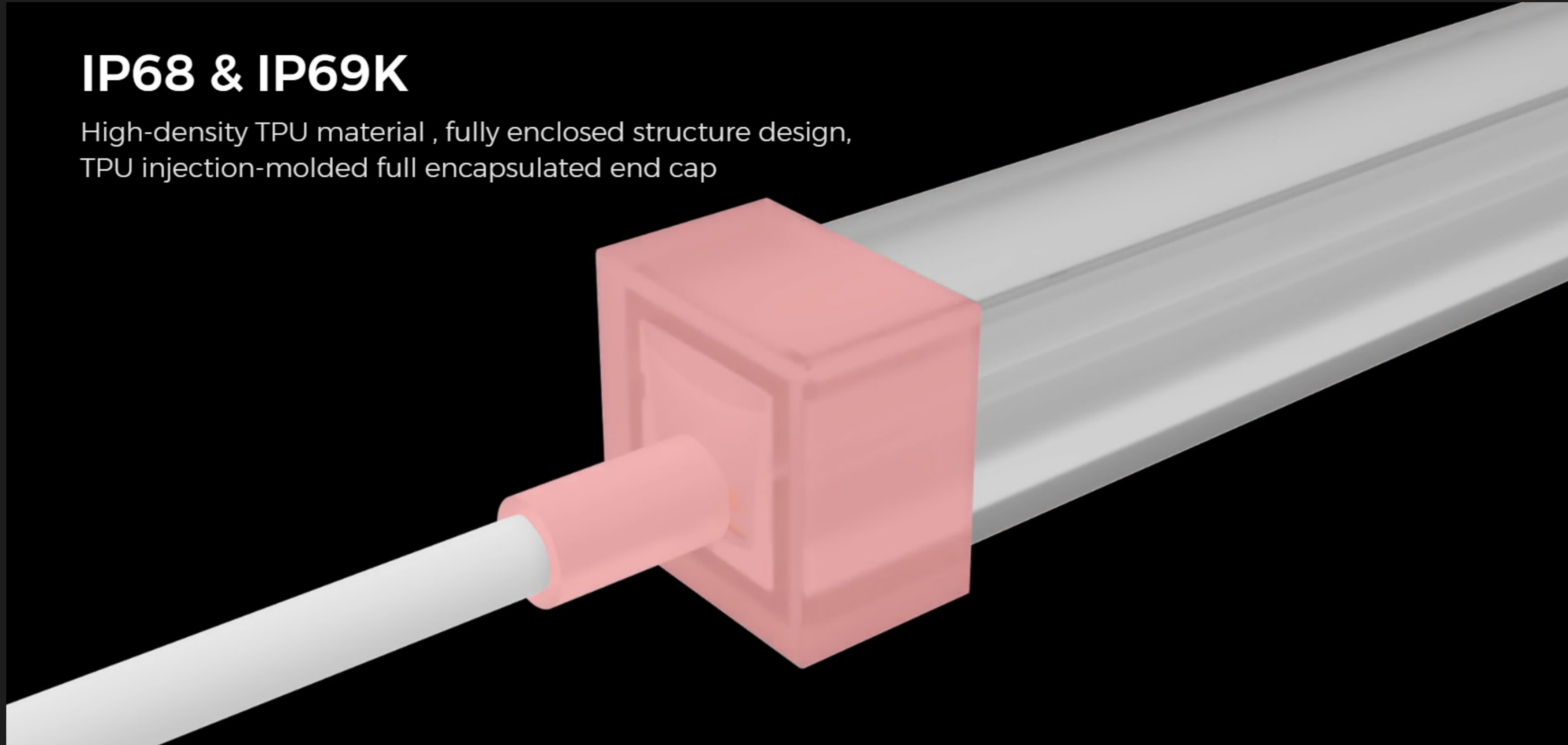
ARCH NEON · AW SERIES

Underwater Application, 3M Deep, IP68/IP69K

Super Protection

IP68 & IP69K

High-density TPU material , fully enclosed structure design,
TPU injection-molded full encapsulated end cap



5-Years Warranty For Underwater Applications

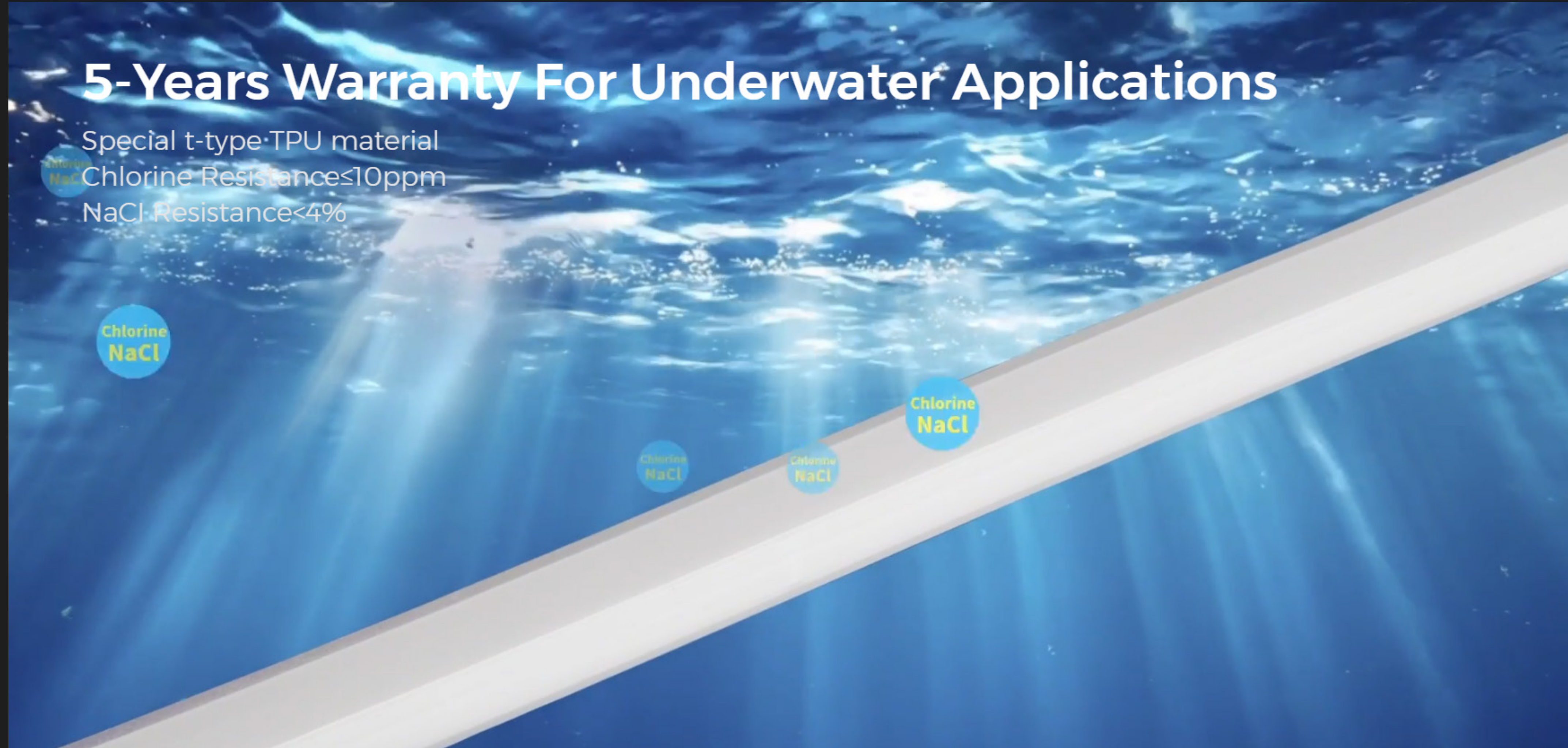
Special t-type TPU material
Chlorine Resistance $\leq 10\text{ppm}$
NaCl Resistance $< 4\%$

Chlorine
NaCl

Chlorine
NaCl

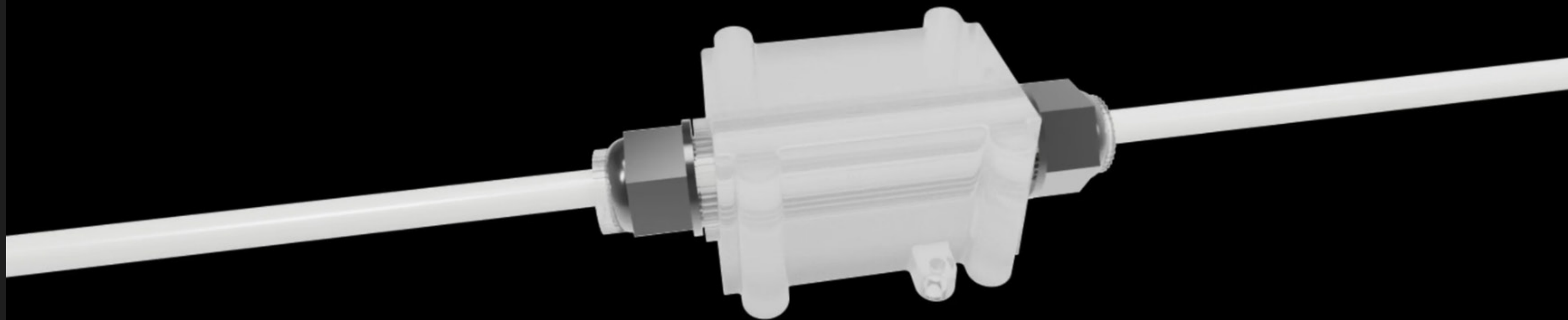
Chlorine
NaCl

Chlorine
NaCl



PC Profile + Waterproof Junction Box Installation Solution For Underwater Application

Non-conductive pc material, Anti-rust anti-brittle,
IP68 waterproof junction box





**IP68 - Long-term Immersion and High-pressure
Waterproof Performance**

IP69K- Anti-high Pressure and High-temperature Water
Impact

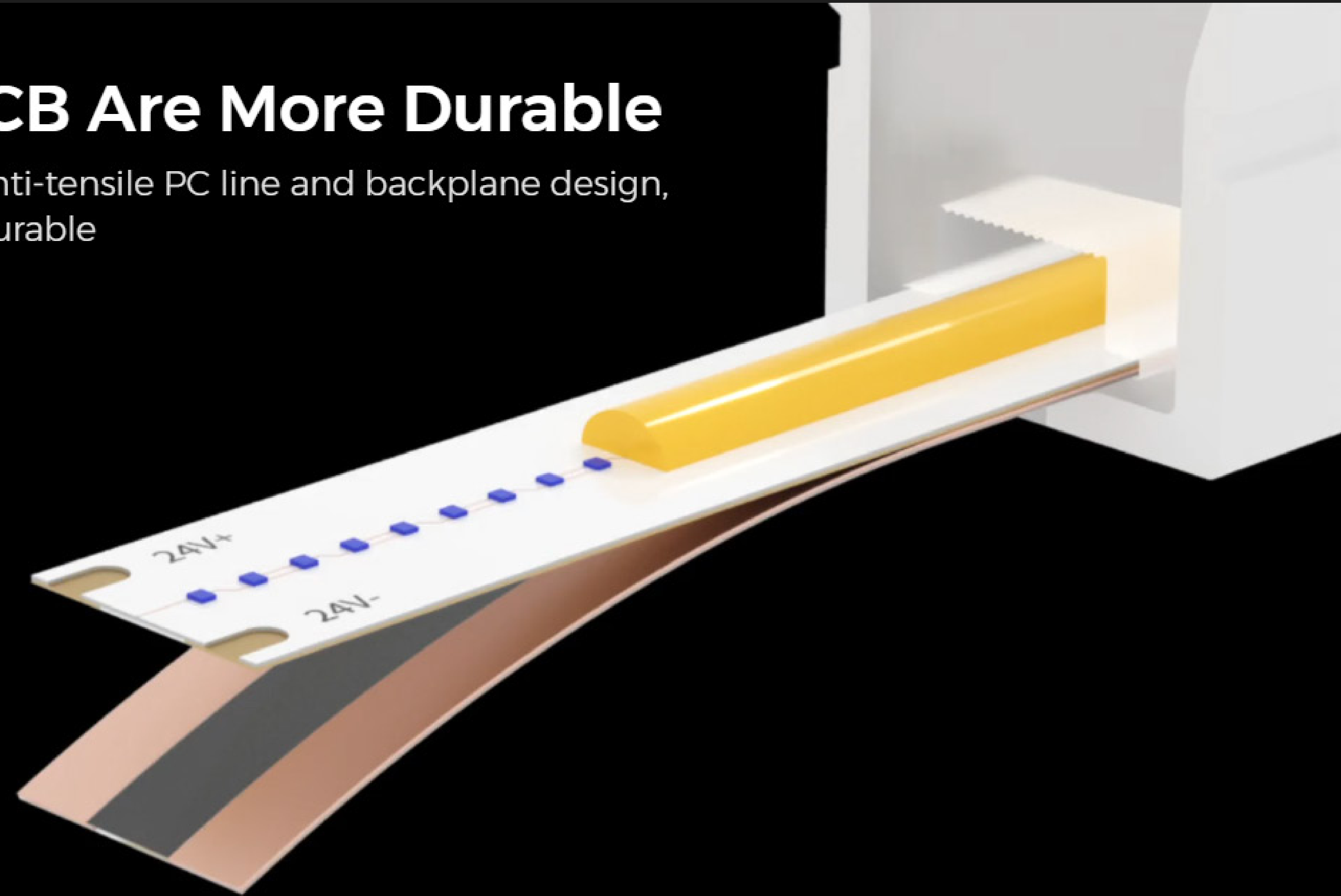


Chlorine Resistance \leq 10ppm NaCl Resistance $<$ 4%

Structural Strength

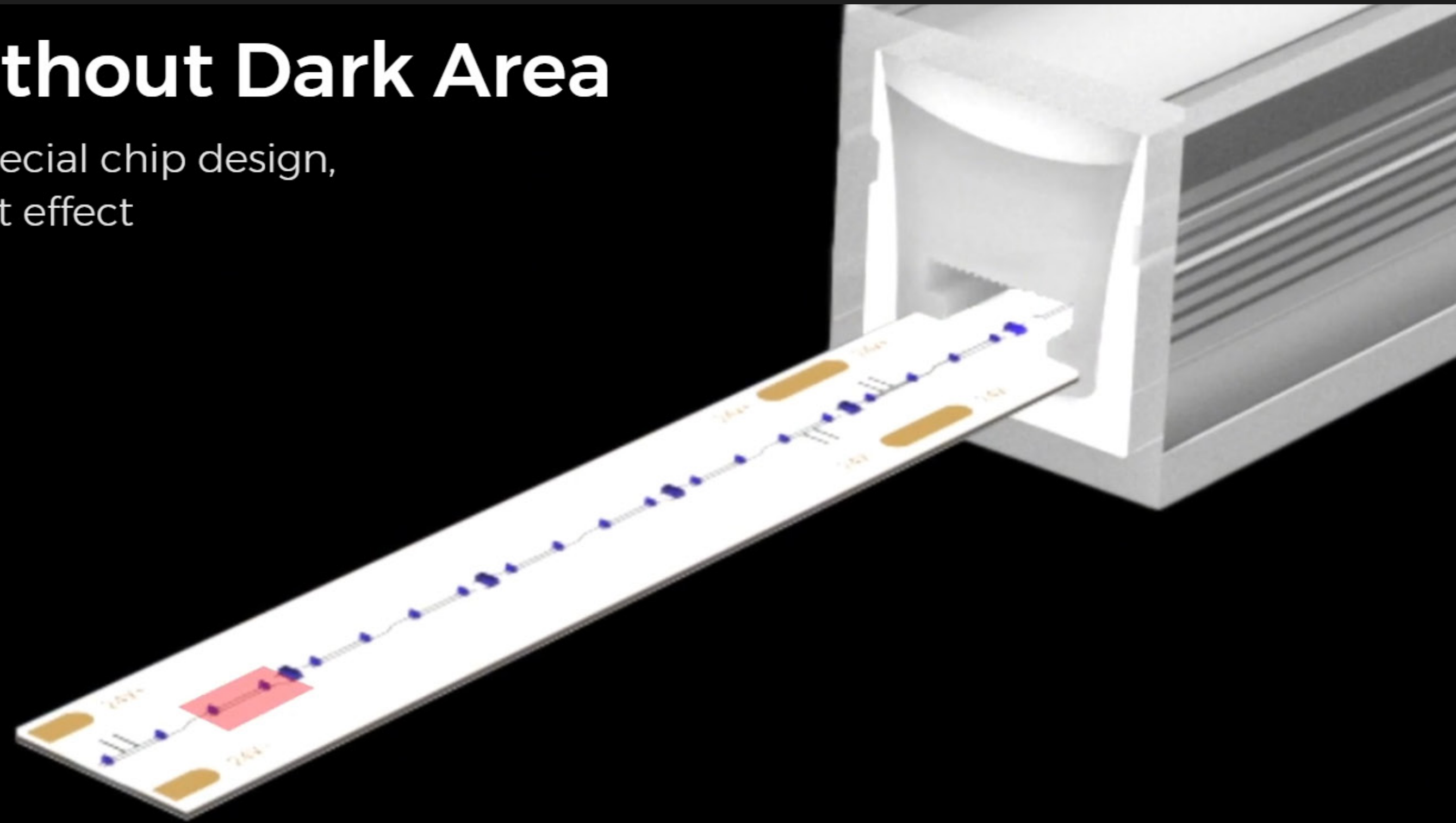
Anti-Breakage PCB Are More Durable

With an innovative 2in1 built-in anti-tensile PC line and backplane design, the anti-breakage PCB is more durable



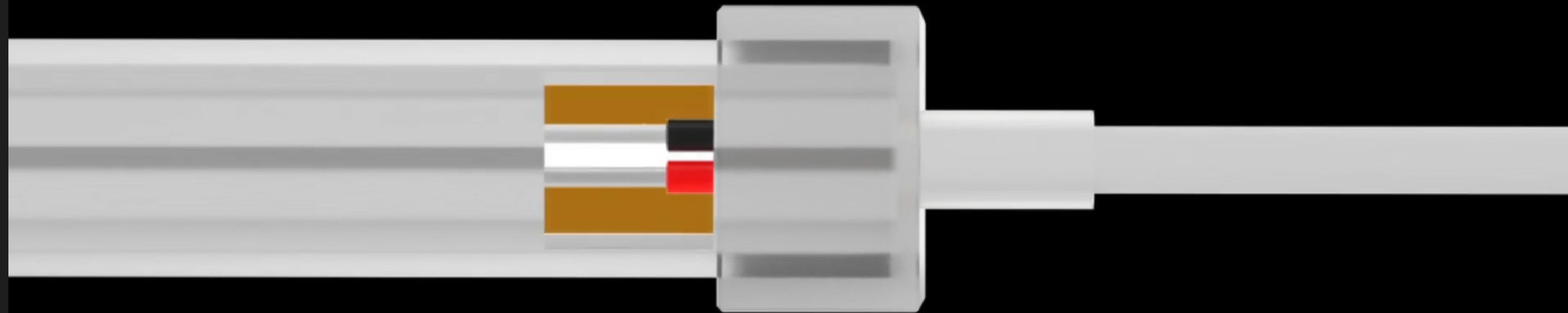
Anti-Dead Chips Without Dark Area

Dual chips parallel LEDs technology, special chip design,
single chip breakage no affect the light effect



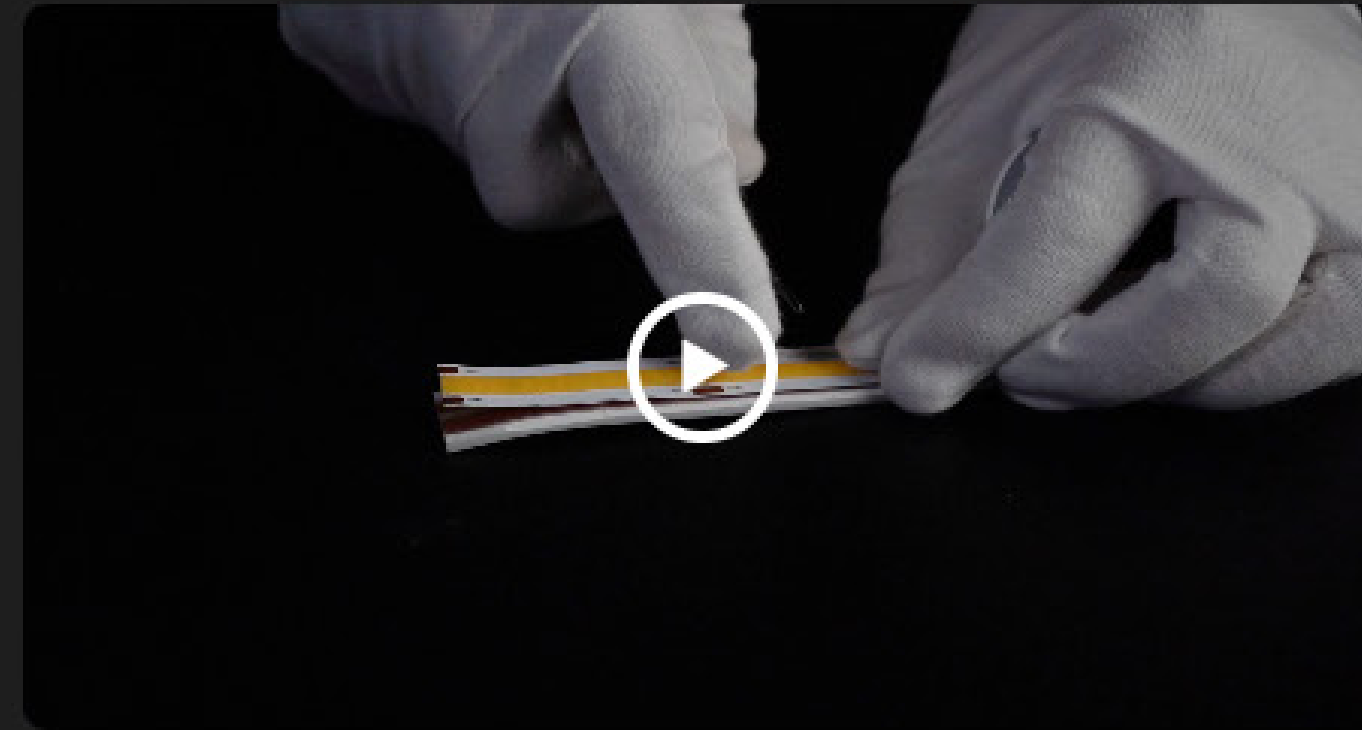
Withstands Installation Stresses

Reinforced wire soldering technology,
designed to overcome external forces





Twisting and Pulling Resistant



Single Chip Failure Does Not Affect Normal Illumination



Designed to Overcome External Forces Such as Pressing, Pulling and Tugging During Installation

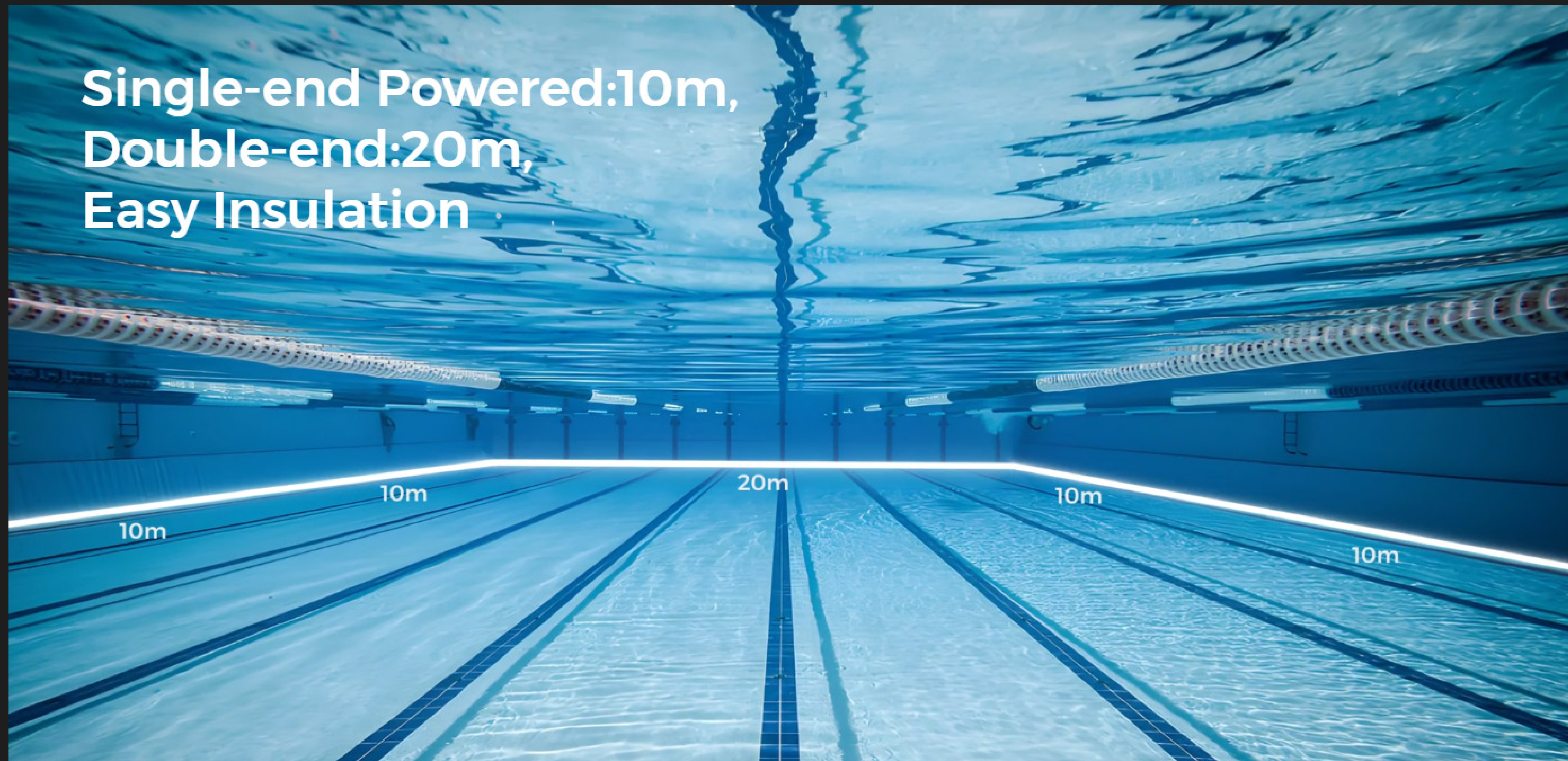
Highly Versatile

Suitable For Professional Swimming Pools With A
3-meter Water Depth Application



3.0M

Single-end Powered:10m,
Double-end:20m,
Easy Insulation



Rich Range Of Light Colors

With newly added ice blue light, RGB/RGBW and color-changing models, offering a wider range of adaptation and more optional configurations



Light Color Standard

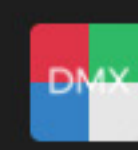
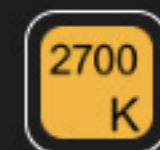
2700K

3000K

4000K

6500K

Frosty Blue



Application

Various Models For Diverse Applications

SIDE BEND
AWS1018



SIDE BEND
AWS2020



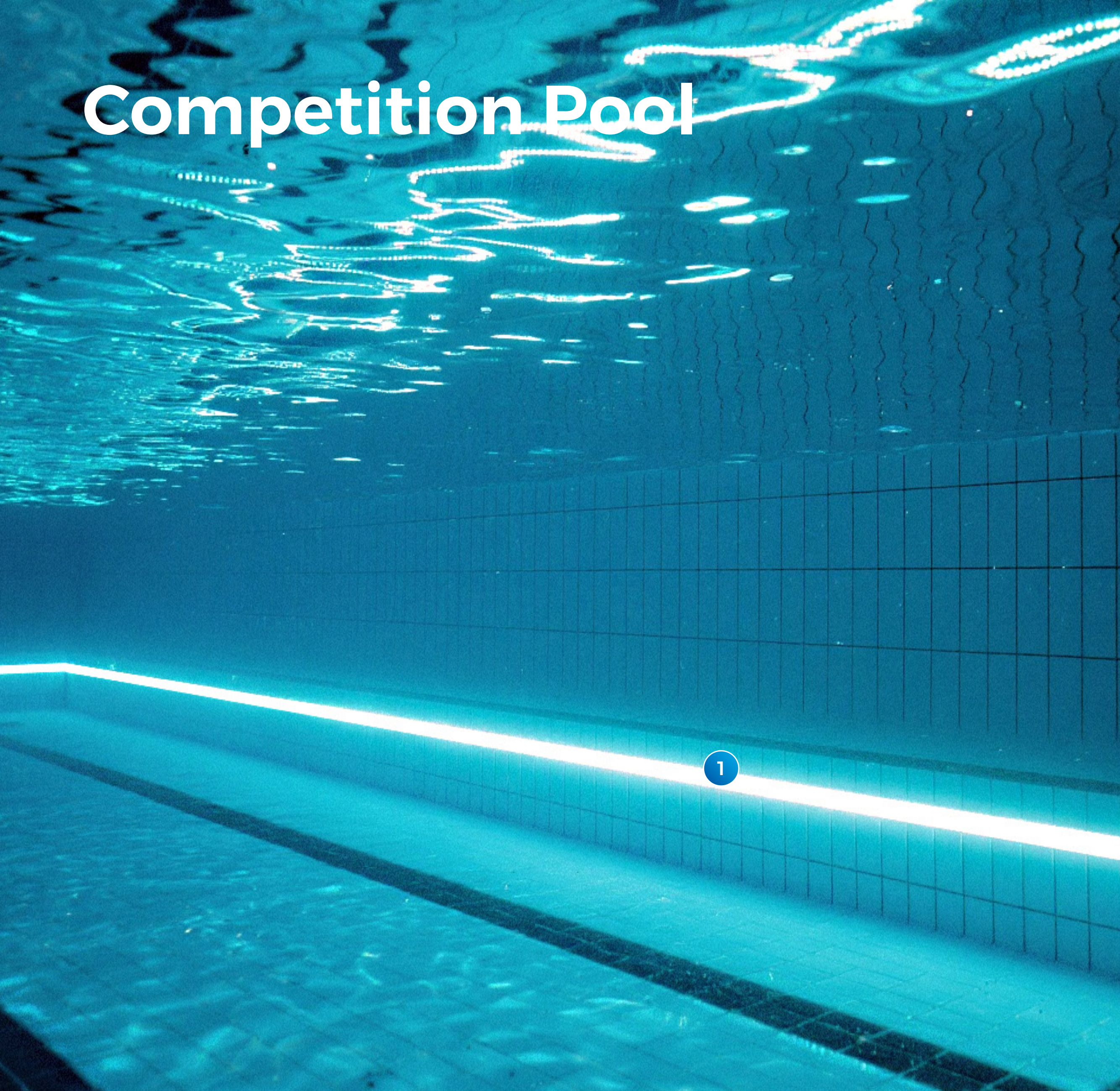
TOP BEND
AWT2013



TOP BEND
AWT2020



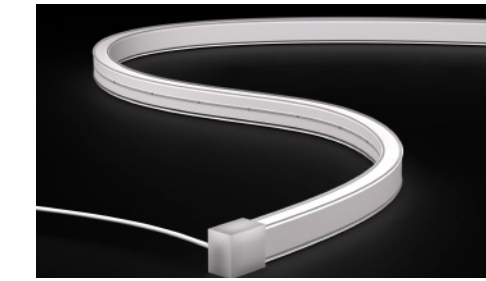
Competition Pool



1 Outline



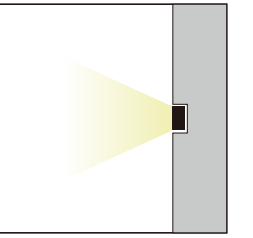
AWS1018



AWT2013

Recommendation Reasons:

1. Given the large size of competition pools, long cascading products are required.
2. Limited installation space demands products with a slim and compact design for easy concealment.
3. White light or frosty blue light is predominantly utilized.



Accessories

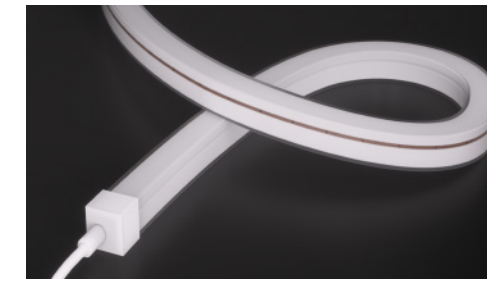


PC Clip

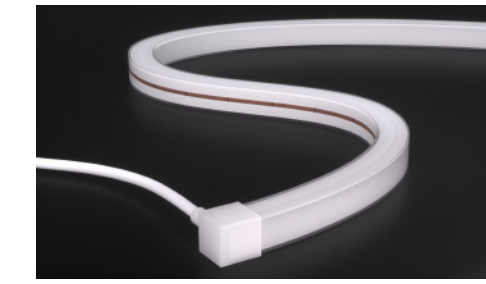
Swimming Pool (For Villa)



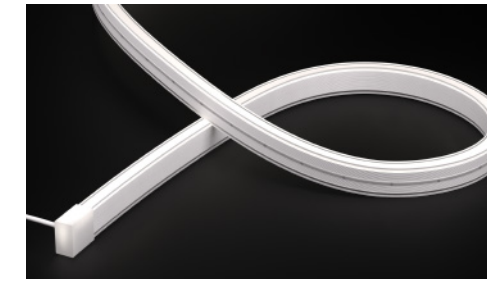
1 Outline



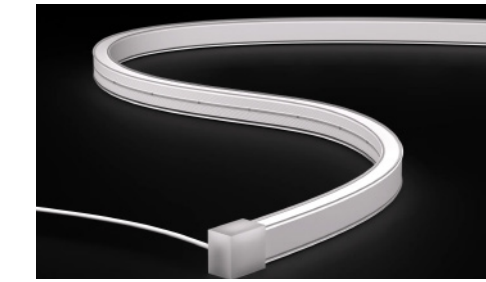
AWS2020



AWT2020



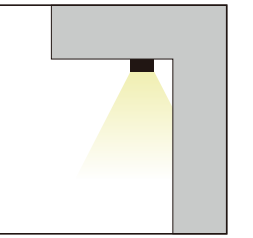
AWS1018



AWT2013

Recommendation Reasons:

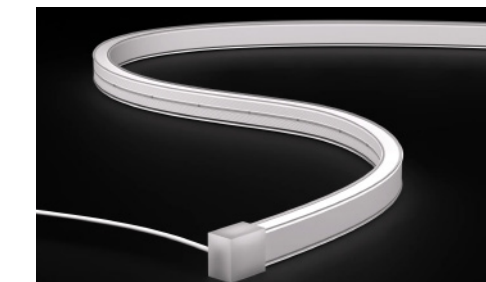
1. Swimming pool sizes are generally not large, yet full-size models are suitable.
2. Rich options for light colors and controls; white light is mostly used for outlining, RGB and DMX is mostly used for ambient decoration.



2 Edge Of The Steps



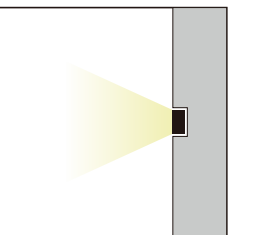
AWS1018



AWT2013

Recommendation Reasons:

1. Requires slim and compact product size for easy concealment.
2. Rich options for light colors and controls; white light is mostly used for outlining, RGB and DMX is mostly used for ambient decoration.

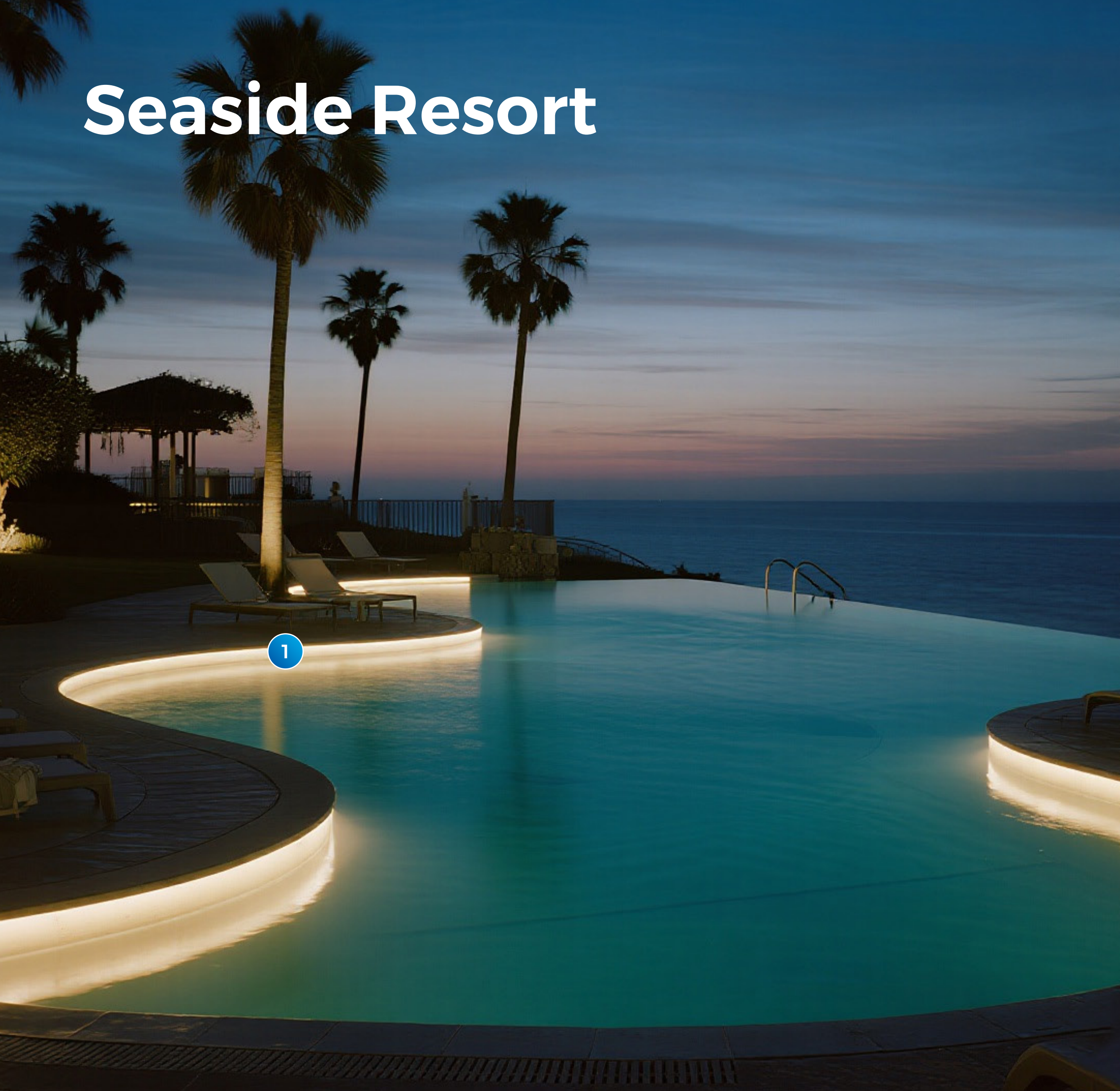


Accessories

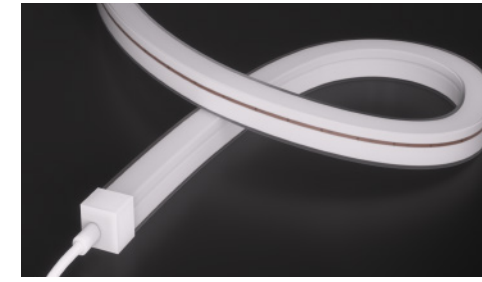


PC Clip

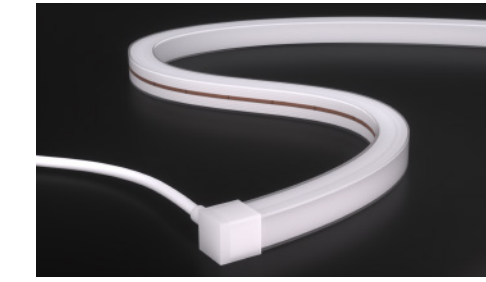
Seaside Resort



1 Outline



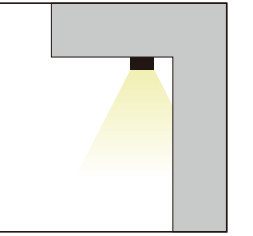
AWS1018



AWT2013

Recommendation Reasons:

1. Pool sizes are relatively large, requiring long cascading products.
2. Requires slim and compact product size for easy concealment.
3. Demand for colored light and color-changing light products.



Accessories

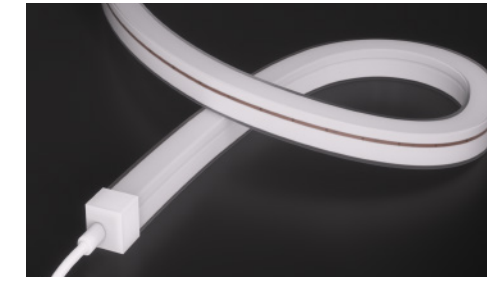


PC Clip

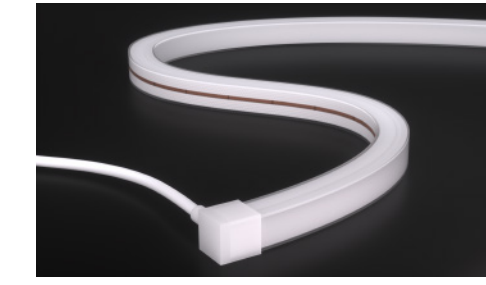
Landscape Pool



1 Outline



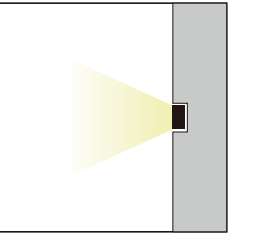
AWS1018



AWT2013

Recommendation Reasons:

1. Landscape pools are generally not large, requiring products with a slim and compact size for easy concealment.
2. There is a demand for colored light and color-changing light products.



Accessories

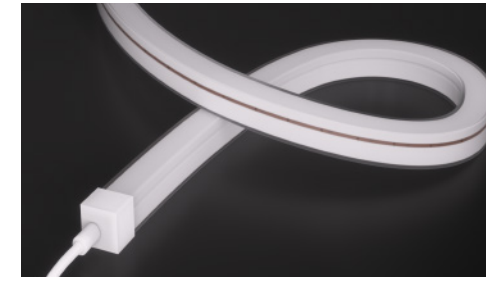


PC Clip

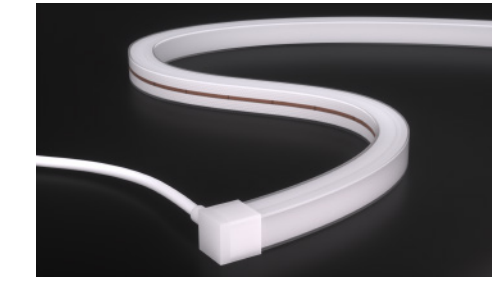
Onsen



1 Outline



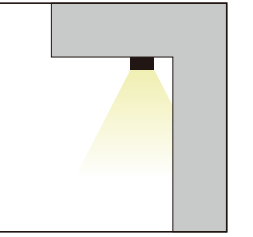
AWS1018



AWT2013

Recommendation Reasons:

1. Onsen pools are typically compact, and full-size models are fully compatible for such applications.
2. White light configurations are predominantly utilized for these settings.
3. Products must be capable of withstanding prolonged exposure to high temperatures and chemical corrosion from sulfur-bearing chemicals and other corrosive substances.



Accessories



PC Clip

Scenario Case

Hangzhou SHUIYUE YUNXI

Applications: Cove Lighting,
Under Eave Lighting, Wall
Wash Lighting, Under Water
Lighting



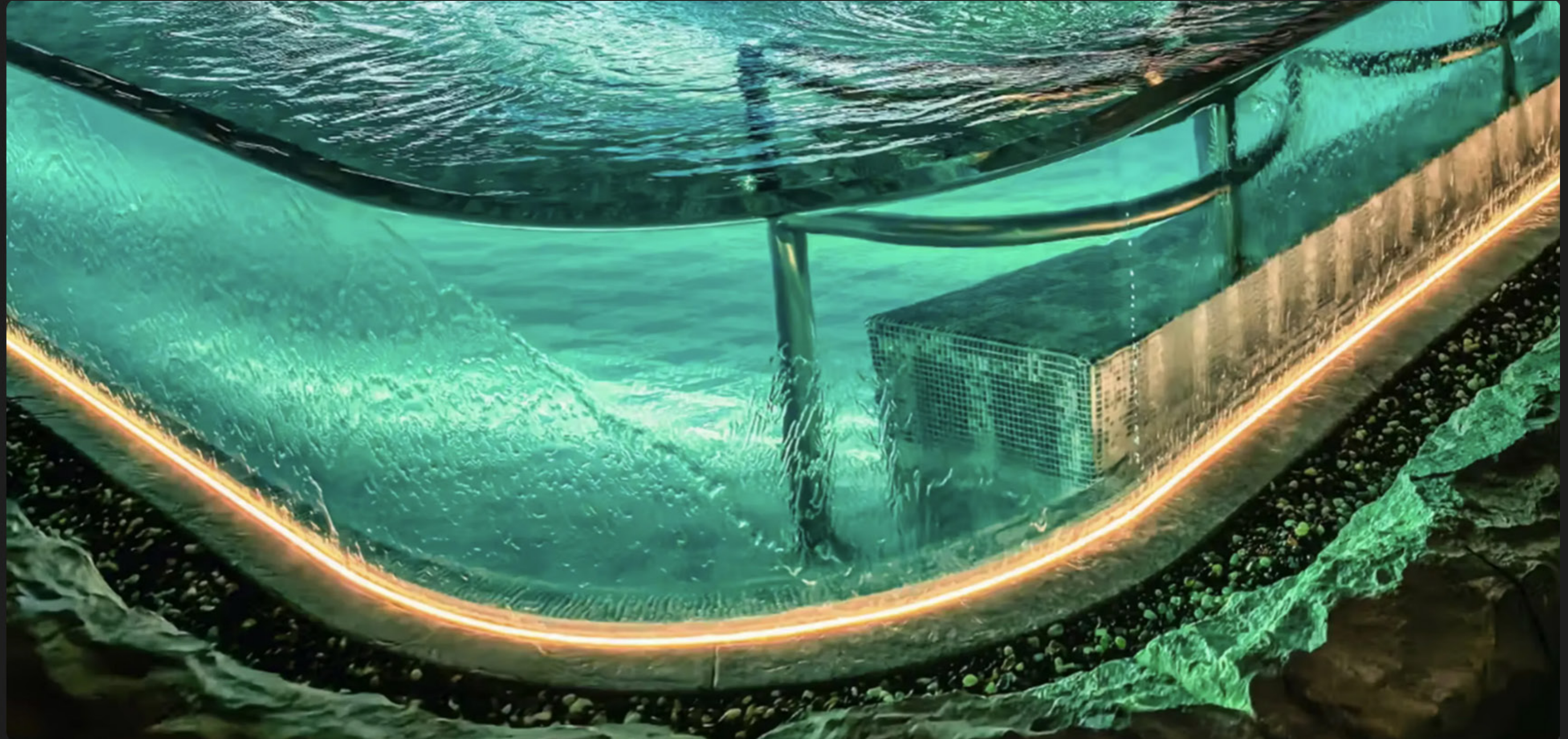
Hangzhou SHUIYUE YUNXI

Applications: Cove Lighting,
Under Eave Lighting, Wall
Wash Lighting, Under Water
Lighting



Chengdu CHEERSUM

Application: FAÇADE,
Contour Lighting, Cove
Lighting, Wall Wash
Lighting, Shelf Lighting

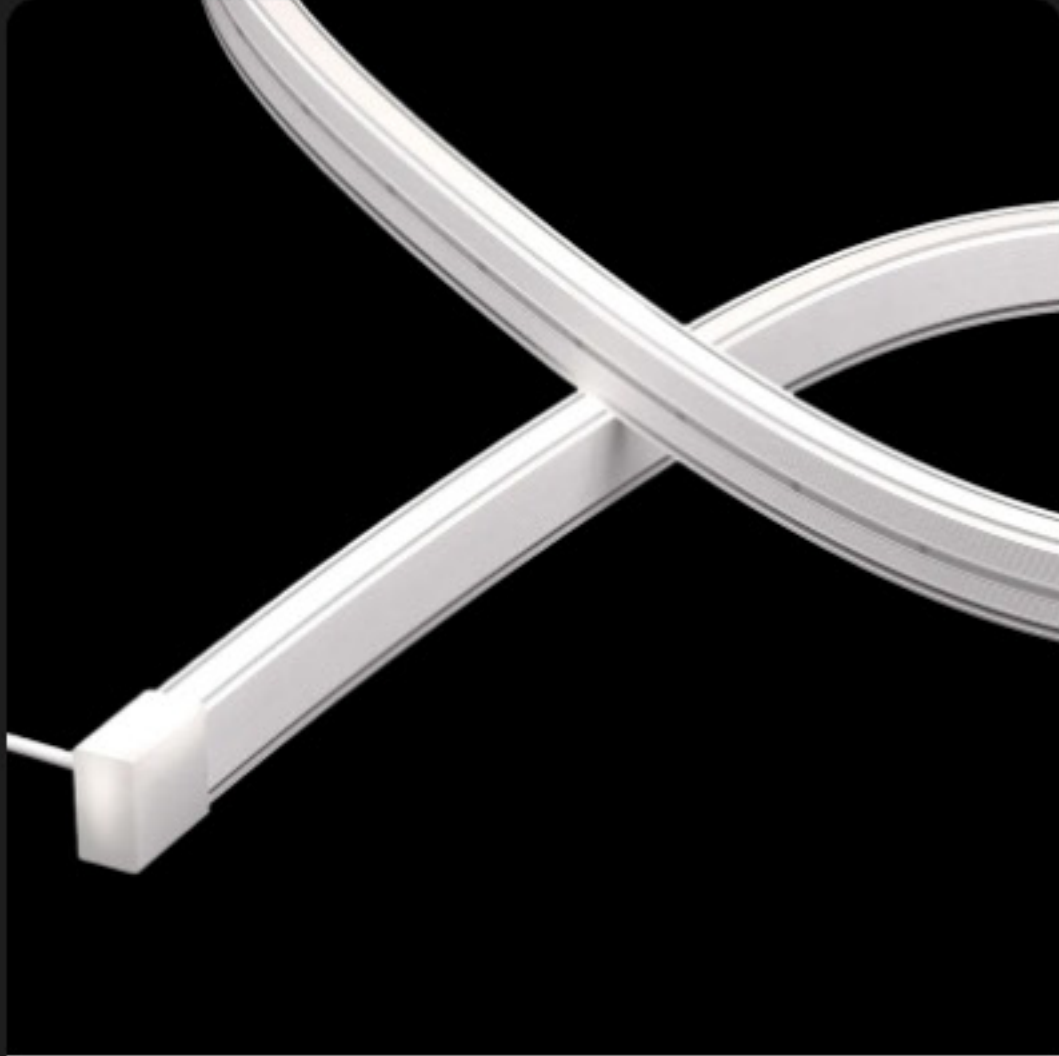


Chengdu CHEERSUM

Application: FAÇADE,
Contour Lighting, Cove
Lighting, Wall Wash
Lighting, Shelf Lighting



Product Model



AWS1018
[Learn more >](#)



AWS2020
[Learn more >](#)

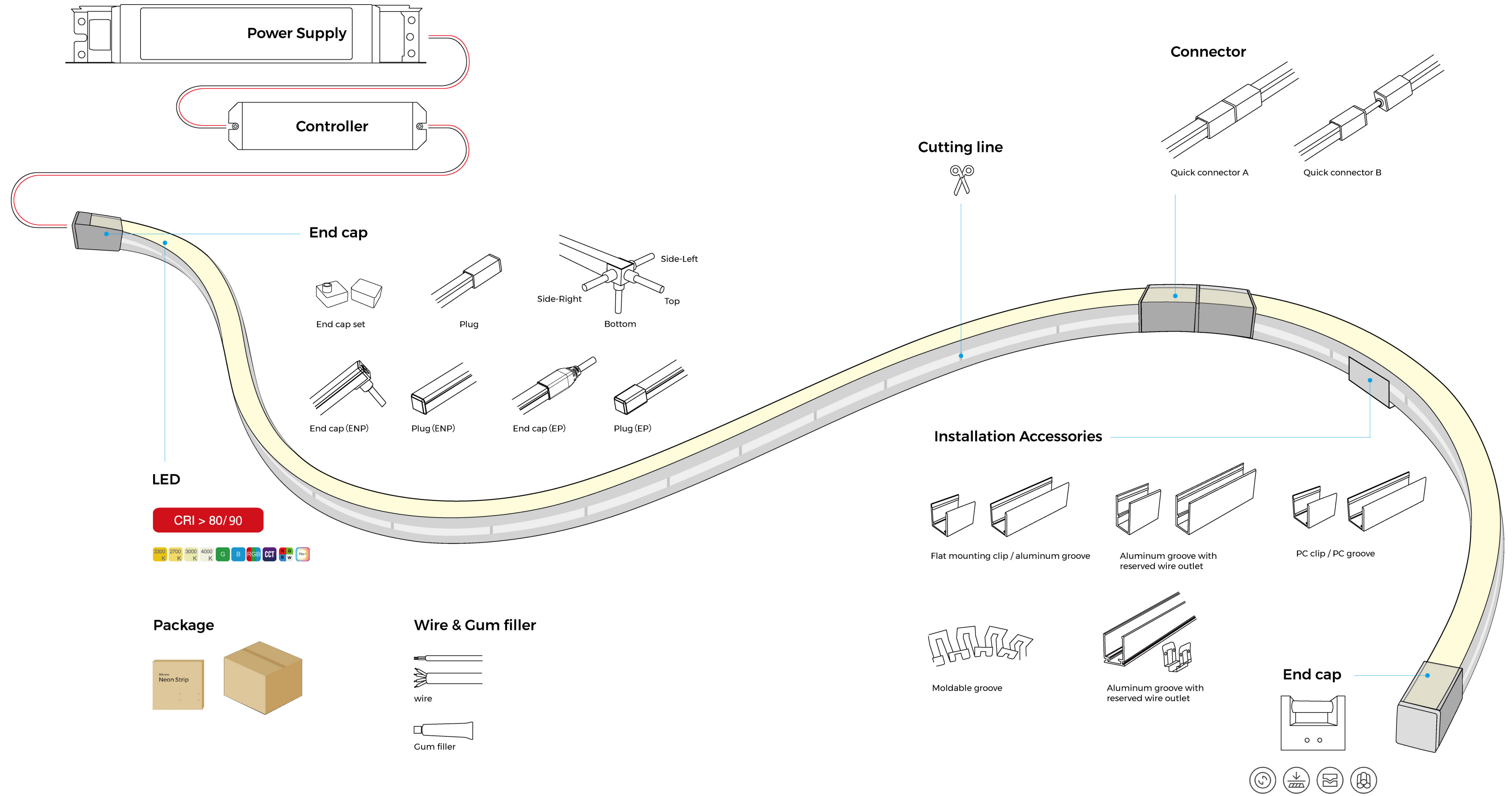


AWT2013
[Learn more >](#)



AWT2020
[Learn more >](#)

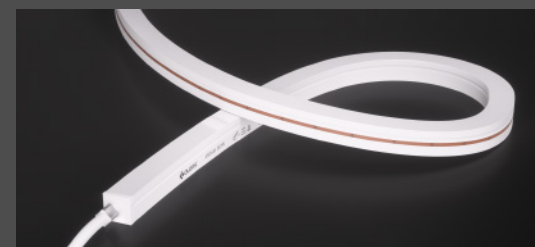
Product Accessories



More Recommendations

AF Series

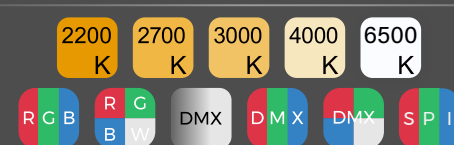
Weather fastness series



Applications in facade lighting / landscape lighting

Top bend:1312/1615/1616/2020/1312U
Side bend:1217/1616/2020/1224

7 Years



IP67

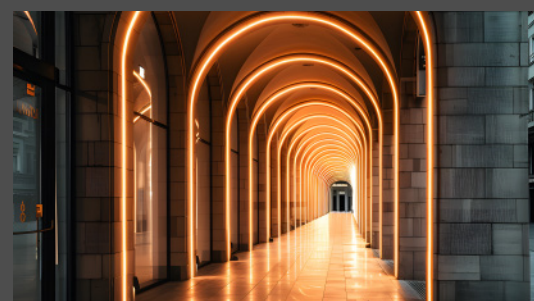
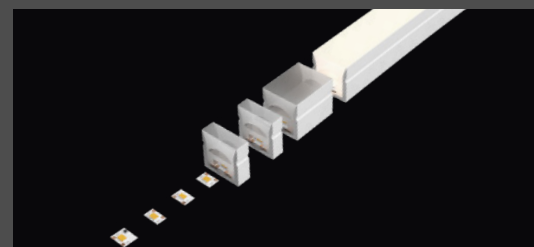
Temperature resistant
-40°C~+60°C

SDCM<5

Length(white light)
24V-10m/R;48V-20m/R

AH Series

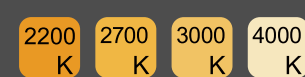
Free cutting series



Applications in facade lighting / landscape lighting

Top bend:1312/1615/1616/2020/1312U
Side bend:1217/1616/2020/1224

7 Years



IP67

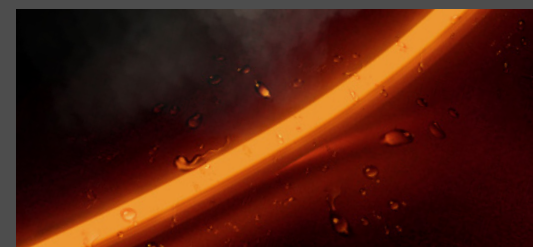
Temperature resistant
-20°C~+50°C

SDCM<5

Length(white light)
24V-10m/R;48V-20m/R

AN Series

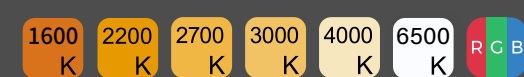
Sauna use series



Applications in sauna room

Top bend:1312/1615
Side bend:1217

5 Years



IP67

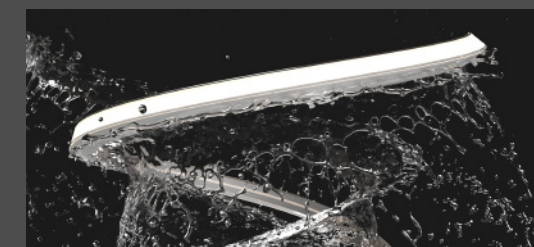
Temperature resistant
-40°C~+110°C

/

Length(white light)
24V-15m/R

AW Series

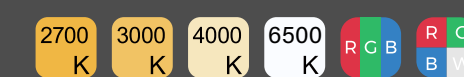
Under-water use series



Applications in swimming pool / underwater

Top bend:2020
Side bend:2020

5 Years



IP68

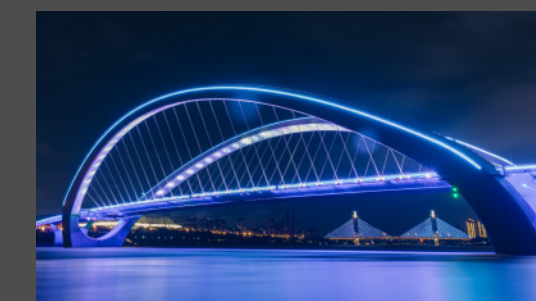
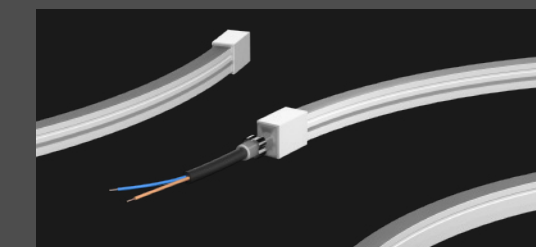
Temperature resistant
-20°C~+50°C

/

Length(white light)
24V-5m/R

AC Series

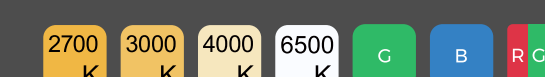
AC230V series



Applications in bridge lighting / landscape lighting

Top bend:1312
Side bend:1217/1224

5 Years



IP65

Temperature resistant
-20°C~+50°C

/

Length(white light)
230V-50m/R